

124th

PENNINGTON COUNTY FAIR

Thief River Falls, MN



July 15-19, 2026
GRANDSTAND LINEUP

THURSDAY, JULY 16
 9 P.M.



FRIDAY & SATURDAY ~ BULLRIDE 7 P.M.



CELEBRATE
 AMERICA'S
 250TH YEAR

EAGLE CREEK
 6:30 P.M.
 followed by
 Jindo Music Bingo



SUNDAY ~ DEMO DERBY 4:30 P.M.



Advance
 GrandPass Tickets
 For All Shows
 \$50 Adults
 \$20 Kids 12 & under
 Beginning Wed., July 1

Featuring
**AMUSEMENT
 ATTRACTIONS**
 On The Midway

STARS & STRIPES
 & COUNTY FAIR
 NIGHTS

4-H & Open Class
**EXHIBITS ON
 DISPLAY**

WEDNESDAY
PARADE ~ 7 P.M.
 FIREWORKS *at Dusk*

Advance Ride Tickets Available online at
www.amusementattractionsinc.com
 until Wed., July 15th at 5 pm



Kenny & The Classics
 Wednesday 8-11 pm



The Snowmen
 Thursday 7-11 pm



James Carothers
 Friday & Saturday 8-11 pm

IN THE BANDSHELL

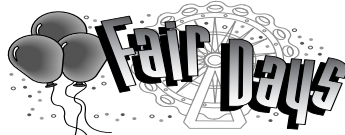
FREE GATE • PARKING AVAILABLE

Check Out Our Website for Activity Updates ~ www.penningtoncountyfair.org

Wood Carving Items will be auctioned off on Saturday at the Blue Ribbon Auction.

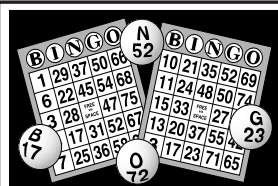
WELCOME TO THE PENNINGTON CO. FAIR AND BULLRIDE! FALLS LIQUOR
 "Northwest Minnesota's Complete Package Store"
Hwy. 59 & Atlantic, TRF 681-1992

BRADY MARTZ



CERTIFIED PUBLIC ACCOUNTANTS AND CONSULTANTS

100 3rd Street East
 Thief River Falls, MN
 218-681-6265



BINGO

4 - 10 P.M. THURSDAY
 4 - 10 P.M. FRIDAY
 2 - 10 P.M. SATURDAY
 2 - 8 P.M. SUNDAY

LOCATED IN THE CURLING CLUB BUILDING



218-681-7034

Check Us Out on Facebook



www.facebook.com/bakerstreetsales



AMERICAN LEGION POST 117 | 324 BROOKS AVE. | THIEF RIVER FALLS



**216 Pennington Ave S
 Thief River Falls
 218-681-7789**

218-681-7789
 www.nordinrealtytrf.com



DIAMONDS & DESIGNS
 Your Family Jewelry and Diamond Center

The Diamond Boutique
 "Natural & Lab Grown Diamonds"
 Three Floors of Fashion, Clothing & Fine Jewelry
 207 LaBree Avenue North, Thief River Falls, MN 56701 ♦ 218-681-1490 ♦ 1-888-834-2436



Refrigerators • Ranges
 Microwaves • Dishwashers
 Washers • Dryers • TVs

Open M-F 9-6; Sat 9-3

RYAN J. BAKKEN, OWNER

101 3RD STREET EAST • THIEF RIVER FALLS • 218-681-2309

Budget has been Serving Thief River Falls Since 1980

Greetings from the Pennington County Fair Board

It is with great pleasure that we welcome you to this year's Fair! We are thrilled to have you join us for five fun-filled days with exciting events, exhibits, thrilling rides, and delicious food.

The Pennington County Fair has been a tradition in our community for many years, and we are proud to continue this tradition by providing a family-friendly environment for all to enjoy. This year's fair promises to be better than ever before, with new attractions, exhibits, and activities for everyone to experience.

We encourage you to take a look at our premium book, which features all the information you need to plan your visit and participate in various competitions and events. We have included a wide range of categories, from livestock shows to baking exhibits, to ensure that everyone has a chance to showcase their talents and skills.

We would like to express our gratitude to all the sponsors, volunteers, and community partners who have helped us make this year's fair possible. Your support and dedication are greatly appreciated, and we could not have done it without you.

So, come on down to the Pennington County Fair and experience the magic of our annual event. We promise you won't be disappointed!

**STARS & STRIPES & COUNTY FAIR NIGHTS!
 AMERICA'S 250TH YEAR**

PENNINGTON COUNTY FAIR BOARD

OFFICERS

PRESIDENT	Steve Dahlen
VICE PRESIDENT	Mike Sorteberg
VICE PRESIDENT	Miranda Carlson
SECRETARY	Roger Gonsorowski
TREASURER	Ray Safranski
PAST PRESIDENT	Floyd Erickson

DIRECTORS

Arlette DeFreece	Deb Howe	Ray Kuznia	Beattie Mickelson
Erin Rondorf	Bernie Huot	Brittney Olson	Aaron Enge
Wayne Harder	Dave Ulrich	Sally Erickson	

DIRECTORS - AT LARGE

Craig Mattson	Emily Bakke	ADawn Nelson	EmmaRae Carlson
Sheryl & Eric Beitel	Daryl Rupprecht	Jodi Peters	Jon Hruby
Todd & Rhonda Mack	Arlen Stenvick	Leroy Jenson	Peggy Lawrence
Rose Klaven	Holly & Mark Haugen	Shari Safranski	Shawna & Jon Demolee
Sherry Sorenson	Cecil Anderson	Neal & Nicole Peterson	Darrin Looker
Trent Nelson	Jessica Hanson	Mike & Jodie Flaagen	Blake Smith
Teri Averill	Doug & Laurie Harbott	Deb Farris	Tom Scholin
Karen & Mike Frisch	Abby Rodelius	Paul & Colleen Omdahl	Kelly Langness
Linnae & Mark Enge	Amy Olson	Darren Asp	Isaac Mills
Todd Carlson	Anita Johnson	Abbie Flaagen	Ladora Dahlen
Jenny Gonsorowski	Allie & Hannah Enge	Tracy Johnson	Seth Vettleson
Matt & Christine Bjerklie	Jill Onkka	Davin Veselka	Amanda Sorteberg
Kaleb & Marissa Flaagen	Sean Farris	Alicia Wikert	Manuel Peralta
Logan SwEnson	Dillon Defreese	Elliot Dahlen	Lynn Germundson

SUPERINTENDENTS

Open Class/Arena	Arlette Defreese, Sherry Sorenson
4-H Club Work	Abby Rodelius, Cindi Kilen, Amy Halvorsen
Senior Citizens	Sherry Sorenson
Livestock	Jon Hruby, Daryl Rupprecht
Rabbits and Poultry	Rose Klaven
Dogs	Dustin Berg
Horses	Miranda Carlson, Emma Rae Carlson
Sheep, Swine, Goats	Jon Hruby
Crops and Vegetables	Tom Scholin
Grounds and Maintenance	Mark Halvorson, Mike Flaagen, Wayne Harder
Parking	Floyd Erickson, Boys & Girls Tennis Clubs
Carnival	Ray Safranski, Floyd Erickson, Wayne Harder
Official Veterinarian	Dr. Samantha Novak, RLF Vet Clinic
Premium Book	Beattie Mickelson, Ray Safranski, Floyd Erickson
Publicity	Floyd Erickson
Grandstand Shows	Floyd Erickson, Ray Safranski, Mike Sorteberg
Grandstand Ticket Sales	Brittney Olson
Commercial Exhibits, Food Vendors, Outdoors	Steve Dahlen, Trent Nelson, Erin Rondorf
Bandshell	Sally Erickson
Beer Gardens	LeRoy Jensen, Wayne Harder, Mark Enge, Aaron Enge
Bingo	Noon Lions, Lions
Demo Derby	Mike Sorteberg, Wayne Harder, Dave Ulrich
Parade	Amy Olson, Jodie Flaagen
Car Club Cruise	Mark Haugen
Ag Education	Darren Asp

RULES AND REGULATIONS

- Rules and regulations will be strictly adhered to.
- ENTRIES FOR PREMIUM PRIZES ARE LIMITED TO RESIDENTS OF NORTHWEST MINNESOTA.
- Open Class entries in Huck Olson Arena on Wednesday, July 15 from 10 am - 5 pm. Livestock entries on Thursday, July 16th and 4-H entries on Tuesday, July 14.
- Only one entry will be allowed to an exhibitor in one lot on any class other than livestock, provided, however, that no animal shall be entered in more than one class except to make up herds or teams. Limited to 2 entries in each class.
- No purse will be awarded where there is no competition, unless specially recommended by the judges, and no unworthy exhibit shall be awarded a prize.
- The association management will use diligence to ensure the safety of livestock or articles after their arrival and placement, but under no circumstances will it be responsible for any loss, injury or damage done to, or occasioned by, or arising from any animal or articles on exhibition, and the exhibitor shall indemnify the Association management thereof against all legal or other proceedings in regard thereto.
- On receipt of entries a card will be prepared for each animal or articles, specifying the class, section, articles and number of entry, the card must remain attached to the articles during the whole period of exhibition.
- All exhibits, including livestock, shall be left on display until 5 P.M. on the last day of the fair, July 19. No ticket shall be removed from the article until that time. The Fair Association will not be responsible for exhibits or property left on the grounds after 7 P.M., Sunday, July 19. **Any exhibits removed early will forfeit their premium.**
- No exhibits or coverings containing them will be admitted with the name or initial on them.
- Articles on exhibition shall not be handled except by officers of the department to which they belong.
- The board of directors reserves the right to make any changes in the premium list and in the rules and regulations that it may deem advisable.
- The interpretations of the rules and the settlement of all questions and differences that may come up in connection with the contest shall be vested in the board of directors.
- The board of directors reserves the right to prorate premiums if the amount exceeds \$10,000.00.
- All bills or materials borrowed for the fair must receive the O.K. of the secretary of the board of directors, otherwise the fair management will not be responsible.
- All premiums and other checks issued by the Fair Association must be cashed before September 1st, so that the checks may be audited for drawing the state appropriation.
- No person will be permitted to distribute advertising matter on the grounds except from their places of business or exhibit. The tacking or posting of any advertising, bills, cards, etc., other than within the spaces occupied by exhibitor, is strictly prohibited. The distribution of handbills, flyers, heralds, etc. will not, under any circumstances, be permitted. Anyone violating this rule will be liable to a fine or expulsion from the grounds, as the board may elect.
- The management reserves the right to exclude from the grounds any person or persons whom it may deem undesirable, or expel from the grounds such person or persons who shall violate any rules.
- Exhibitors will please bring in only the articles listed in the premium book. No special will be accepted.
- The fair board has the right to accept or reject any exhibit, including 4-H exhibits.
- The fair board reserves the right to regulate all raffles.

LIVESTOCK & HORSE RULES

- Entries in the livestock department should be done online through the registration application that can be sent to you by the barn superintendents. If there are questions, please contact Jon Hruby at 218-686-2317 or hruby1228@gmail.com about the livestock barn and Miranda Carlson at 218-686-5185 or miranda.nelson@yahoo.com about the horse barn. Poultry will register in person at the fair once they enter the barn. For questions regarding them, contact Rose Klaven at 218-686-3039. Have your registrations completed prior to July 9th. This is necessary in order that stalls/pens can be assigned based on the number of entries that are registered prior to opening day of the fair. All animal exhibits must be in place by 5:00 on the second day of the fair.
- Space in the barn (not location) will be reserved in the following order.
 - 4-H member fair animals
 - 4-H member additional animals
 - Open class animals in county
 - Open class animals surrounding counties
 - Other
 ***Space is limited in each facility per family.
- Livestock, Horses, Poultry and Rabbits are not permitted on the fair grounds before 1:00 pm on Wednesday unless approved by barn management. Setup may begin on Sunday July 14th.
- Livestock and Horse entries will be available on ShoWorks registration site and will only be allowed to register 2 animals per "Lot." Animals must be preregistered by July 10th. If animals are not registered, then they will not be allowed to participate.
- There will be NO PARKING of cars, trucks or campers between the poultry barn and livestock barn along with areas near the horse barn. No animals are allowed on or North of the tar road.
- Cattle, Sheep, Hogs, Meat and Dairy goats will be shown by registered and non-registered classes. Registered animals must have their papers obtainable the day of the show.
- Lot Champion and Grand Champion rounds will include both registered and non-registered animals.
- Animals that are registered to be shown and do not enter the ring to be judged during their set event will forfeit their premiums for the event (Lot).
- Exhibitors must keep their stalls available to the public between the hours of 8:00 a.m. and 10:00 p.m. each day of the fair except for days that there is a show or livestock auction. Each area of the barn will be closed according to the event and will re-open once the event is done. The barns will close at 10:00 p.m. each night and exhibitors working on their animals will be the only ones allowed in the barn.
- Each exhibitor will pay \$1.00 per entry for horse, cattle, sheep swine or goats. If only 1 animal is entered, then the fee will be \$2.00.
- Animals must be entered in either meat or breeding and not both. Each animal must be shown in an individual class in order to participate in group classes.
- Exhibitors will need to provide their own bedding, feed and equipment. Animals must be fed and watered adequately throughout the fair. Improper care of your animals may result in the exhibitor and animals being asked to leave the fairgrounds.
- All species of animals in the barns will be examined by the official show veterinarian each day of the fair. Certificates for all livestock/horses from out of state must comply with the Minnesota board of animal health. All animals must be healthy, free of warts, ringworm or other contagious/infectious/communicable diseases. If they arrive at the fair with signs of disease or are deemed unsafe, they will be sent home by the Veterinarian and/or Superintendent. All animals must be officially identified according to the most current guidelines set forth by the Minnesota Board of Animal Health.
- All poultry except for waterfowl and pigeons must meet one of the following conditions to qualify for exhibition:
 - Officially test negative for Pullorum and Typhoid diseases within 90 days prior to the opening of exhibition or
 - Originate directly from parent stock classified as Pullorum-Typhoid clean or comparable classification within 90 days of the start of exhibition.
 The exhibition must show compliance with one of the above by means of an official form issued by a breeder, hatchery or seller that shows record of the test results, or a proper statement certifying to origin along with each animal being identified by a leg or wing band.
- Horses are required to have a current (within 12 months of exhibition) Coggin's Test. A test is not required for suckling foals. Negative test results must be handed to horse barn superintendent as soon as the horse arrives onto the fairgrounds. Failure to do so may result in animals being asked to leave the fairgrounds.
- In order to receive your premium check, you must completely clean out your stalls, pens or cages. Your animals must stay on the fairgrounds until 5:00 pm on Sunday of the fair unless released by the superintendents. This includes cattle, horses, sheep, goats, swine, rabbits and poultry.
- No intact males (uncastrated) over the age of 1 year old are allowed in exhibition during the Pennington County Fair except for sheep and goats.
- Additional changes/deletions may occur at the discretion of the superintendents.
- All animals in the barns must be shown in at least one individual class.
- Superintendents have final decisions.
- Exhibitors are responsible for their animals during the fireworks performance on Wednesday night at dusk. You must be present in the barn and near your animals. All gates will be shut and the public will be asked to leave the building.

PARADE

WEDNESDAY, JULY 15TH
7 P.M.

PARADE ROUTE

From the Pennington County Fairgrounds
On 6th Street East to Knight Avenue
Over to 4th Street and back to the
Pennington County Fairgrounds on 4th Street

Interested in participating in the Parade this year as a Business, Group, Club, Individual Car, Music or just an entry?

Parade Participants - Enter parade route on Hwy. 59 and 6th Street ONLY!

State Rule: No throwing of candy from floats or vehicles.

REGISTER AT BENTON, SAFRANSKI & CO.

681-4287

OR ONLINE www.penningtoncountyfair.com

GAMES • FOOD • PRIZES • RIDES • FUN • SHOWS
COME AND VISIT AMUSEMENT ATTRACTIONS
AND EXPERIENCE "A LITTLE BIT MORE..."

PENNINGTON COUNTY FAIR
JULY 15-19, 2026

**ADVANCE SALE
SPECIALS**

DAY PASS

Unlimited Rides - Unlimited Fun For One Day

\$25⁰⁰*

Low, Low Price Of **ADVANCE SALE ONLY**

\$30 AT THE GATE

DAILY PASS: 5 PM - CLOSING WED. - THURS. - FRI.
3 PM - CLOSING SAT. 1 PM - CLOSING SUN.

MEGA RIDE PASS

Unlimited Rides - Unlimited Fun For All Days

\$75⁰⁰**

Low Price Of

MEGA RIDE PASSES ONLY AVAILABLE BY ADVANCE SALE
Advance Sale Tickets Available Until 5 pm
Wednesday, July 15, 2026

AVAILABLE ONLINE AT

WWW.AMUSEMENTATTRACTIONSINC.COM



Welcome To The PENNINGTON COUNTY FAIR

NORTHERN STATE BANK

DOWNTOWN AND HUGO'S MARKET

681-4020 • www.nsbtrf.com

Thief River Falls, MN 56701

MEMBER
FDIC



SPEED'S AUTO SERVICE

(218) 681-4154

COMPLETE AUTO CARE

- Transmission and Engine Repair
- Complete Brake Work
- All Electronic Systems Repair
- Towing Available

Same Location since 1965

1605 US Hwy. 59 SE
In front of Walmart
Thief River Falls

RENT COMMERCIAL BOOTH SPACE

HUCK OLSON ARENA

July 15 open at 9 am for setup
Open to the public 6-10 pm

Thursday - Saturday:
Open to the public 11 am-10 pm

Sunday:
Open to the public 11 am-6 pm

CONTACT
ERIN RONDORF
218-416-2833

WIN



1ST: ARCTIC CAT ALTERRA

600 BLACK HILLS EDITION ATV

2ND: \$1,000 LOCAL SHOPPING SPREE

3RD: \$1,000 LOCAL SHOPPING SPREE

4TH: \$1,000 LOCAL SHOPPING SPREE

5TH: G-FORCE ARMS 12-GA. SHOTGUN

6TH: HOWA SNOWKING 223 RIFLE

7TH: B & S Q 6500 WATT GAS GENERATOR

8TH: HAWKE 10X42 BINOCULARS

9TH: ROOMBA 105 ROBOT VACUUM

10TH: CORN HOLE LAWN GAME

11TH: \$500 CASH 14TH: \$200 CASH

12TH: \$400 CASH 15TH: \$100 CASH

13TH: \$300 CASH

NEED NOT BE PRESENT TO WIN

\$10.00 DONATION



Drawing held **Sunday, July 19**

Pennington Co. Fairgrounds 9 P.M.

Tickets Available From Fair Board Members

Net Proceeds To Be Used To Help Finance Free Bandshell Entertainment
Exempt Activity X-57012-26

LIVESTOCK DEPARTMENT

Overall Livestock Superintendent: Jon Hruby

DIVISION A – BEEF CATTLE

Superintendent: Jon Hruby 218-686-2317, hruby1228@gmail.com or Daryl Rupprecht 218-280-1378

Prizes: 1st - \$30.00; 2nd - \$25.00; 3rd - \$20.00; 4th - \$15.00; 5th - \$10.00

Preregister by July 9, 2026 so that stalls can be arranged. All animals must be shown individually in order to be shown in group classes. All registered breeds will be shown together and the same applies to non-registered animals unless the "Lot" states otherwise. All cattle will be examined by the official veterinarian on entry day and must be identified by the proper tags or tattoos. Please remember to have your farm ID/Premise number and your registration papers on the day of the show. For further questions, please review the livestock/horse rules on page 3 of the premium book. **Each animal has a \$1.00 entry fee and minimum of \$2.00 if only 1 animal entered.**

Class 1 - Non-Registered
2 - Registered (Must have papers obtainable at the fair)

- | | |
|----------------------------------------------------------------------------------------------------------------------------------------------------------------------------------------------------------------------------------------------------------------------------------------------------------------------------------------------------------------------------------------------------------------------------------------------------------------------------------------------------------------------------------------------------------------------------------------------------------------------------------------------------------------------------------------------------------------------------------------------------------------------------------------------------------------------------------------------------------------------------------------------------------------------------------------------------------------------------------------------------------------------------------------------------------------------------------------------------------------|----------------------------------------------------------------------------------------------------------------------------------------------------------------------------------------------------------------------------------------------------------------------------------------------------------------------------------------------------------------------------------------------------------------------------------------------------------------------------------------------------------------------------------------------------------------------------------------|
| <p>Lot 1. Summer bull calf, born May 1, 2026 and later
2. Spring bull calf, born January 1 - April 30, 2026
3. Champion and Reserve Champion Bull Calf – top 2 animals from "Lots" 1-2 and both classes together (No Premium)
4. Summer heifer calf, born May 1, 2026 and later
5. Spring heifer calf, born January 1 - April 30, 2026
6. Fall heifer calf, born September 1 - December 31, 2025
7. Summer yearling heifer, born May 1 - August 31, 2025
8. Junior yearling heifer, born January 1 - April 30, 2025
9. Junior Champion and Junior Reserve Champion Breeding Female – top 2 animals from "Lots" 4-8 and both classes together (No Premium)
10. Senior yearling heifer, born September 1 - December 31, 2024
11. 2-year-old cow, born January 1, 2024 – December 31, 2024
12. 3-4-year-old cow, born January 1, 2022 – December 31, 2023
13. 5+ year old cow, born December 31, 2021 and before
14. Senior Champion and Senior Reserve Champion Breeding Female – top 2 animals from "Lots" 10-13 and both classes together (No Premium)</p> | <p>15. Market Beef – Prospect calf, born January 1 - June 30, 2026
16. Market steer/heifer, born January 1 - August 31, 2025
17. Dairy steer (100% Dairy Breed), born January 1 - August 31, 2025
18. Champion and Reserve Champion Market Animal – top 2 animals from "Lots" 15-17 and both classes together (No Premium)
19. Grand Champion and Reserve Grand Champion Beef Animal – top 2 animals from "Lots" 3, 9, 14 and 18 (No Premium)
20. Cow/Calf - calf born January 1, 2026 or later
21. Produce of dam, not less than two animals from one dam</p> |
|----------------------------------------------------------------------------------------------------------------------------------------------------------------------------------------------------------------------------------------------------------------------------------------------------------------------------------------------------------------------------------------------------------------------------------------------------------------------------------------------------------------------------------------------------------------------------------------------------------------------------------------------------------------------------------------------------------------------------------------------------------------------------------------------------------------------------------------------------------------------------------------------------------------------------------------------------------------------------------------------------------------------------------------------------------------------------------------------------------------|----------------------------------------------------------------------------------------------------------------------------------------------------------------------------------------------------------------------------------------------------------------------------------------------------------------------------------------------------------------------------------------------------------------------------------------------------------------------------------------------------------------------------------------------------------------------------------------|

DIVISION B – DAIRY CATTLE

Superintendent: Jon Hruby 218-686-2317, hruby1228@gmail.com or Daryl Rupprecht 218-280-1378

Prizes: 1st - \$30.00; 2nd - \$25.00; 3rd - \$20.00; 4th - \$15.00; 5th - \$10.00

Preregister by July 9, 2026 so that stalls can be arranged. All animals must be shown individually in order to be shown in group classes. All registered breeds will be shown together and the same applies to non-registered animals unless the "Lot" states otherwise. All cattle will be examined by the official veterinarian on entry day and must be identified by the proper tags or tattoos. Please remember to have your farm ID/Premise number and your registration papers on the day of the show. For further questions, please review the livestock/horse rules on page 3 of the premium book. **Each animal has a \$1.00 entry fee and minimum of \$2.00 if only 1 animal entered.**

Class 1 - Non-Registered
2 - Registered (Must have papers obtainable at the fair)

- Lot 1. Novice - animal class is for exhibitor's ages 7 years and under (accompanied by adult)
2. Spring heifer calf, born March 1, 2026 and after
3. Winter heifer calf, born December 1, 2025 - February 28, 2026
4. Fall heifer calf, born September 1 - November 30, 2025
5. Summer and Spring yearling heifer, born March 1 - Aug 31, 2025
6. Intermediate and Senior yearling heifer, born September 1, 2024 - February 28, 2025
7. Junior Champion and Junior Reserve Champion Female – top 2 animals from "Lots" 2-6 and both classes together (No Premium)
8. 2-year-old cow, born September 1, 2023 – August 31, 2024 (Milking Yearlings will show in this class)
9. 3-year-old cow, born September 1, 2022 – August 31, 2023
10. 4-year-old cow, born September 1, 2021 – August 31, 2022
11. Aged cow, born August 31, 2021 and before
12. Dry cows (2 years old + and must have freshened)
13. Senior Champion and Senior Reserve Champion Female – top 2 cows from "Lots" 8-12 and both classes together (No Premium)
14. Grand Champion and Reserve Grand Champion Dairy Female - top 2 animals from "Lots" 7 and 13 (No Premium)
15. Produce of dam, two animals from one dam
16. Dam and Daughter
17. Best Udder – 1 animal per exhibitor and all breeds shown together (No Premium)

DIVISION C – SHEEP

Superintendent: Jon Hruby 218-686-2317, hruby1228@gmail.com

Prizes: 1st - \$30.00; 2nd - \$25.00; 3rd - \$20.00; 4th - \$15.00; 5th - \$10.00

Preregister by July 9, 2026 so that stalls can be arranged. All animals must be shown individually in order to be shown in group classes. All registered breeds will be shown together and the same applies to non-registered animals unless the "Lot" states otherwise. All sheep will be examined by the official veterinarian on entry day and must be identified by the proper tags or tattoos. Please remember to have your farm ID/Premise number and your registration papers on the day of the show. For further questions, please review the livestock/horse rules on page 3 of the premium book. **Each animal has a \$1.00 entry fee and minimum of \$2.00 if only 1 animal entered.**

Class 1 - Meat Breeds Non-Registered
2 - Meat Breeds Registered (Must have papers obtainable at the fair)
3 - Wool Breeds Non-Registered
4 - Wool Breeds Registered (Must have papers obtainable at the fair)

- Lot 1. Novice - animal class is for exhibitor's ages 7 years and under (accompanied by adult)
2. Junior ram lamb, born March 1, 2026 or later
3. Senior ram lamb, born January 1 - February 28, 2026
4. Yearling ram, born January 1 - December 31, 2025
5. Champion and Reserve Champion Breeding Ram – top 2 animals from "Lots" 2-4 and all classes together (No Premium)
6. Junior ewe lamb, born March 1, 2026 or later
7. Senior ewe lamb, born January 1 - February 28, 2026
8. Fall ewe lamb, born September 1 - December 31, 2025
9. Yearling ewe, born January 1 - December 31, 2025
10. Champion and Reserve Champion Breeding Ewe - top 2 animals from "Lots" 6-9 and all classes together (No Premium)
11. Wether dam ewe lamb, born on or after December 1, 2025
12. Wether dam yearling ewe, born before December 1, 2025
13. Champion and Reserve Champion Wether Dam - top 2 animals from "Lots" 11-12 and all classes together (No Premium)
14. Prospective Market lamb, born After April 1, 2026
15. Market wether (all classes shown together)
16. Market ewe (all classes shown together)

17. Champion and Reserve Champion Market Lamb - top 2 animals from "Lots" 14-16 and all classes together (No Premium)
18. Grand and Reserve Champion Overall Sheep - top 2 animals from "Lots" 5, 10, 13 and 17 (No Premium)
19. Pair of ewe lambs, bred and owned by exhibitor
20. Pair of yearling ewes, bred and owned by exhibitor
21. Pair of ram lambs, bred and owned by exhibitor
22. Young Flock, 3 animals born from January 1 - June 30, 2026 (both sexes allowed)

DIVISION D – SWINE

Superintendent: Jon Hruby 218-686-2317, hruby1228@gmail.com

Prizes: 1st - \$30.00; 2nd - \$25.00; 3rd - \$20.00; 4th - \$15.00; 5th - \$10.00

Preregister by July 9, 2026 so that stalls can be arranged. All animals must be shown individually in order to be shown in group classes. All registered breeds will be shown together and the same applies to non-registered animals unless the "Lot" states otherwise. All swine will be examined by the official veterinarian on entry day and must be identified by the proper tags or tattoos. Please remember to have your farm ID/Premise number and your registration papers on the day of the show. For further questions, please review the livestock/horse rules on page 3 of the premium book. **Each animal has a \$1.00 entry fee and minimum of \$2.00 if only 1 animal entered.**

- Class 1 - Non-Registered
2 - Registered (Must have papers obtainable at the fair)

- Lot 1. Breeding gilt, born January of 2026
2. Breeding gilt, born February of 2026
3. Breeding gilt, born March of 2026
4. Champion and Reserve Champion Breeding Gilt – top 2 animals from "Lots" 1-3 and both classes together (No Premium)
5. Market barrows (all registered and non-registered shown together)
6. Market gilts (all registered and non-registered shown together)
7. Champion and Reserve Champion Market Swine – top 2 animals from "Lots" 5-6 and both classes together (No Premium)
8. Grand Champion and Reserve Grand Champion Overall Swine - top 2 animals from "Lots" 4 and 7 (No Premium)

DIVISION DG – DAIRY GOAT

Superintendent: Jon Hruby 218-686-2317, hruby1228@gmail.com

Prizes: 1st - \$30.00; 2nd - \$25.00; 3rd - \$20.00; 4th - \$15.00; 5th - \$10.00

Preregister by July 9, 2026 so that stalls can be arranged. All animals must be shown individually in order to be shown in group classes. All registered breeds will be shown together and the same applies to non-registered animals unless the "Lot" states otherwise. All goats will be examined by the official veterinarian on entry day and must be identified by the proper tags or tattoos. Please remember to have your farm ID/Premise number and your registration papers on the day of the show. For further questions, please review the livestock/horse rules on page 3 of the premium book. **Each animal has a \$1.00 entry fee and minimum of \$2.00 if only 1 animal entered.**

- Class 1 - Non-Registered
2 - Registered (Must have papers obtainable at the fair)

- Lot 1. Junior buck kid, born April 1 - June 30, 2026
2. Senior buck kid, born January 1 - March 31, 2026
3. Champion and Reserve Champion Breeding Buck – top 2 animals from "Lots" 1-2 and both classes together (No Premium)
4. Junior doe kid, born April 1 - June 30, 2026
5. Senior doe kid, born January 1 - March 31, 2026
6. Dry yearling doe, born in 2025
7. Junior Champion and Junior Reserve Champion Dairy Goat – top 2 animals from "Lots" 4-6 and both classes together (No Premium)
8. Milking yearling doe, born in 2025
9. Milking 2-year-old doe, born in 2024
10. Milking 3-Year-old doe, born in 2023
11. Milking 4-Year-old doe, born in 2022
12. Milking 5-Year-old and older, born in 2021 and before
13. Senior Champion and Senior Reserve Champion Dairy Goat – top 2 animals from "Lots" 8-12 and both classes together (No Premium)
14. Grand Champion and Reserve Grand Champion Dairy Goat – top 2 animals from "Lots" 3, 7 and 13 (No Premium)
15. Dam and Daughter
16. Dairy Herd – 1 herd per exhibitor (4 animals currently milking)
17. Best Udder – 1 animal per exhibitor and all breeds together (No Premium)

DIVISION DMG – MEAT GOATS

Superintendent: Jon Hruby 218-686-2317, hruby1228@gmail.com

Prizes: 1st - \$30.00; 2nd - \$25.00; 3rd - \$20.00; 4th - \$15.00; 5th - \$10.00

Preregister by July 9, 2026 so that stalls can be arranged. shown together and the same applies to non-registered animals unless the "Lot" states otherwise. All goats will be examined by the official veterinarian on entry day and must be identified by the proper tags or tattoos. Please remember to have your farm ID/Premise number and your registration papers on the day of the show. For further questions, please review the livestock/horse rules on page 3 of the premium book. **Each animal has a \$1.00 entry fee and minimum of \$2.00 if only 1 animal entered.**

- Class 1 - Non-Registered
2 - Registered (Must have papers obtainable at the fair)

- Lot 1. Junior buck kid, born April 1 - June 30, 2026
2. Senior buck kid, born January 1 - March 31, 2026
3. Champion and Reserve Champion Breeding Buck – top 2 animals from "Lots" 1-4 and both classes together (No Premium)
4. Junior doe kid, born April 1 - June 30, 2026
5. Senior doe kid, born December 1, 2025 - March 31, 2026

6. Yearling breeding doe, born in 2025
7. 2-year-old and over breeding doe, born in 2024 and before
8. Champion and Reserve Champion Breeding Doe – top 2 animals from "Lots" 6-9 and both classes together (No Premium)
9. Prospective Market Animal - Castrated males born after April 1, 2026
10. Market Dairy Goat (100% dairy goat breed)
11. Market Wether or Doe under 75 lbs.
12. Market Wether or Doe over 75 lbs
13. Champion and Reserve Champion Market Animal – top 2 animals from "Lots" 11-14 and both classes together (No Premium)
14. Grand Champion and Reserve Grand Champion Meat Goat – top 2 animals from "Lots" 5, 10 and 15 (No Premium)
15. Dam and Offspring (either sex)

DIVISION EL – LLAMA/ALPACA

Superintendent: Jon Hruby 218-686-2317, hruby1228@gmail.com

Prizes: 1st - \$30.00; 2nd - \$25.00; 3rd - \$20.00; 4th - \$15.00; 5th - \$10.00

Preregister by July 9, 2026 so that stalls can be arranged. All animals must be shown individually in order to be shown in group classes. All registered breeds will be shown together and the same applies to non-registered animals unless the "Lot" states otherwise. All llamas will be examined by the official veterinarian on entry day and must be identified by the proper tags or tattoos. Please remember to have your farm ID/Premise number and your registration papers on the day of the show. For further questions, please review the livestock/horse rules on page 3 of the premium book. **Each animal has a \$1.00 entry fee and minimum of \$2.00 if only 1 animal entered.**

- Class: 1. Llama
2. Alpaca

- Lot 1. Suri, Juvenile animals – 1 to 12 months old
2. Suri, 1 – 2 year old – 13 to 36 months old
3. Suri, Adult animal – 37 months old and older
4. Light Fiber, Juvenile animals – 1 to 12 months old
5. Light Fiber, 1 – 2 year old – 13 to 36 months old
6. Light Fiber, Adult animal – 37 months old and older
7. Heavy Fiber, Juvenile animals – 1 to 12 months old
8. Heavy Fiber, 1 – 2 year old – 13 to 36 months old
9. Heavy Fiber, Adult animal – 37 months old and older
10. Champion and Reserve Champion Llama/Alpaca – top 2 animals from "Lots" 1-9 and both classes together (No Premium)
11. Obstacle Course
12. Trail Pack
13. Public Relations
14. Costume Contest

DIVISION F – POULTRY

Superintendent: Rose Klaven 218-686-3039

Prizes: 1st - \$3.00; 2nd - \$2.00; 3rd - \$1.00

Before poultry is unloaded from vehicles, a barn manager must see your animals ID

RULES AND REGULATIONS

A barn manager must see your animal's ID before they can be unloaded.

- Any breed of poultry can be entered.
- Birds must be free of any infections or communicable diseases.
- Poultry over one year old with the exception waterfowl, must be individually identified with a leg or wing band and must (1) have a negative test for pullorum-typhoid disease conducted within 90 days prior to the opening day of exhibition; or (2) if under 5 months of age, originate directly from parent stock tested and found negative for pullorum-typhoid disease within the last 12 months.
- Feed will be provided, and they will be fed.
- Entry fees and registration are due once the animals have arrived in the barn. Entry fee is 25 cents per bird or 50 cents for each pen of birds.
- No exhibitor may show more than 4 female birds per "Lot" and no more than 2 male birds per "Lot" and may only enter a max of 30 birds across all lots.
- All young birds must be older than 2 months (Pigeons and Doves must have their permanent bands).

CHICKEN BREEDS

- Class 1 – Cock – male bird hatched prior to 2026 3 – Cockerel – male hatched in 2026
2 – Hen – female bird hatched prior to 2026 4 – Pullet – female hatched in 2026

AMERICAN BREEDS

1. Buckeyes
2. Delaware
3. Dominiques
4. Holland – (Barred, White)
5. Javas – (Black, Mottled)
6. Jersey Giants – (Black, Blue, White)
7. Lamonas – (White)
8. New Hampshire – (Red)
9. Partridge Chanticleer
10. Plymouth Rocks – (Barred, Blue, Buff, Colombian, Partridge, Silver-Penciled, White)
11. Rhode Island Reds
 - a. Single Comb
 - b. Rose Comb
12. Rhode Island Whites – (Rose Comb)
13. White Chantecler
14. Wyandottes – (Black, Blue, Buff, Colombian, Golden-Laced, Partridge, Silver-Laced, Silver-Penciled, White)

ASIATIC BREEDS

15. Brahmas – (Buff, Dark, Light)
16. Cochins – (Barred, Black, Blue, Brown, Buff, Golden-Laced, Partridge, Silver-Laced, White)
17. Langshans – (Black, Blue, White)

MEDITERRANEAN BREEDS

18. Anconas
a. Single Comb
b. Rose Comb
22. Minorcas
a. Single Comb – (Black, Buff, White)
b. Rose Comb – (Black, White)
19. Andalusians (Blue)
20. Catalans – (Buff)
21. Leghorns
a. Single Comb – (Dk Brown, Golden, Lt Brown)
23. Sicilian Buttercup
24. White Faced Black Spanish

ENGLISH BREEDS

25. Australorp – (Black)
26. Cornish – (Buff, Dark, Red, White, White-Laced)
27. Dorkings – (Colored, Cuckoo, Red, Silver-Gray, White)
28. Orpingtons – (Buff, Black, Blue, White)
29. Redcaps
30. Sussex – (Light, Red, Speckled)

CONTINENTAL BREEDS

31. French
a. Crevecœur – (Black)
b. Favevelles – (Salmon, White)
c. Houdans – (Mottled, White)
d. La Flèche – (Black)
e. Marans – (Black Copper, Wheaten, White)
32. Northern European
a. Barnevalder
b. Campines – (Golden, Silver)
c. Hamburgs – (Black, Golden-Penciled, Golden-Spangled, Silver-Penciled, Silver-Spangled, White)
d. Lakenvelder
e. Wellsummer
33. Polish
a. Polish
i. Bearded – (Buff Laced, Golden, Silver, White)
ii. Non-Bearded – (Black Crested White, Buff Laced, Golden, Silver, White Crested Black, White Crested Blue, White)

HYBRID BREEDS

34. California White
35. Cinnamon Queen
36. Calico Princess
37. Sapphire Gems
38. Sex-links – (Black, Golden)
39. Smoky Pearl
40. Spitzhauben – (Golden Spangled, Silver Spangled)
41. Other

MISCELLANEOUS BREEDS (ALL OTHER BREEDS)

42. Games
a. Modern Game – (Birchen, Black, Black Breasted Red, Brown Red, Golden Duckwing, Red Pyle, Silver Duckwing, Wheaten, White)
b. Old English Game
43. Oriental
a. Aseel – (Black Breasted Red, Dark, Spangled, Wheaten, White)
b. Cubalaya – (Black, Black Breasted Red, White)
c. Malay – (Black Breasted Red, Red Pyle, Spangled, Wheaten, White)
d. Phoenix – (Silver Golden)
e. Shamo – (Black, Black Breasted Red, Dark, Wheaten)
f. Sumatra – (Black, Blue)
g. Yokohama – (Red Shoulder, White)
44. Miscellaneous
a. Ameraucana – (Black, Blue, Blue Wheaten, Brown Red, Buff, Silver, Wheaten, White)
b. Araucana – (Black, Black Breasted Red, Golden Duckwing, Silver Duckwing, White)
c. Naked Neck – (Black, Buff, Red, White)
d. Sultan – (White)

BANTAM SINGLE COMB CLEAN-LEGGED BREEDS

45. Ancona – (Mottled)
46. Andalusian – (Blue)
47. Australorp – (Black)
48. Campine – (Golden, Silver)
49. Catalana – (Buff)
50. Delaware
51. Dorking – (Colored, Silver-Gray)
52. Dutch – (Black, Blue Cream Light Brown, Blue Light Brown, Cream Light Brown, Light Brown, Silver)
53. Holland – (Barred)
54. Japanese – (Birchen Gray, Black, Black Mottled, Black-Tailed Buff, Black-Tailed White, Blue, Blue Mottled, Blue-Red, Brown-Red, Buff Colombian, Cuckoo, Dark Gray, Golden Duckwing, Gray, Lavender, Miller's Gray, Partridge, Red, Red Mottled, Silver-Gray, Tri-Coulered, Wheaten and White)
55. Javas – (Black, Mottled)
56. Jersey Giants – (Black, White)
57. Lakenvelder
58. Lamona – (White)
59. Leghorn – (Barred, Brown, Black, Black-Tailed Red, Buff, Colombian, Red, Silver, White)
60. Minorca – (Black, Buff, White)
61. Naked-Neck Chicken – (Black, Buff, Red, White)
62. Nankin
63. New Hampshire – (Red)
64. Orpington – (Buff, Black, Blue, White)
65. Phoenix – (Golden, Silver)
66. Plymouth Rock – (Barred, Blue, Buff, Colombian, Partridge, Silver-Penciled, White)
67. Rhode Island Red
68. Serama
69. Spanish – (White Faced Black)
70. Sussex – (Light, Red, Speckled)
71. Welsummer

BANTAM ROSE-COMB CLEAN-LEGGED BREEDS

72. Ancona (Rose Comb) – (Mottled)
73. Bearded d'Anvers – (Black, Blue, Cuckoo, Mille Fleur, Mottled, Porcelain, Quail, Self Blue, White)
74. Dominique
75. Dorking (Rose Comb) – (White)
76. Hamburg – (Black, Golden-Penciled, Golden-Spangled, Silver-Penciled, Silver-Spangled, White)
77. Leghorn (Rose Comb) – (Barred, Brown, Black, Black-Tailed Red, Buff, Colombian, Red, Silver, White)
78. Minorca (Rose Comb) – (Black, Buff, White)
79. Nankin (Rose Comb)
80. Redcap
81. Rhode Island Red – (Red)
82. Rhode Island White – (White)
83. Rose comb – (Black, Blue, White, All others)
84. Sebright – (Golden, Silver)
85. Wyandotte – (Black, Buff, Colombian, Golden-Laced, Partridge, Silver-Laced, Silver-Penciled, White)

BANTAM FEATHER-LEGGED BREEDS

86. Belgian Bearded d'Uccle – (Black, Black Quail, Blue, Blue Quail, Cuckoo, Lavender, Lavender Quail, Mille Fleur, Mottled, Porcelain, Quail, Silver Quail, White)
87. Booted – (Black, Black Mottled, Blue, Buff Mottled, Cuckoo, Gold Millefleur, Lavender, Lemon Millefleur, Millefleur, Porcelain, Silver Millefleur, White)
88. Brahma – (Buff, Dark, Light, Partridge)
89. Cochin – (Barred, Black, Blue, Brown, Buff, Golden-Laced, Partridge, Silver-Laced, White)
90. Faverolles – (Salmon, White)
91. Langshan – (Black, Blue, White)
92. Silkie
a. Bearded – (Black, Blue, Buff, Gray, Splash, Partridge, White)
b. Nonbearded – (Black, Blue, Buff, Gray, Splash, Partridge, White)
93. Sultan – (White)

BANTAM ALL OTHER COMB CLEAN-LEGGED BREEDS

94. Ameraucana – (Black, Blue, Brown Red, Buff, Silver, Wheaten, White)
95. Araucana – (Black, Black Breasted Red, Golden Duckwing, Silver Duckwing, White)
96. Buckeye
97. Chantecler – (Partridge, White)
98. Cornish – (Buff, Dark, Red, White, White-Laced)
99. Crevecœur – (Blue, Cuckoo, White)
100. Cubalaya – (Black, Black Breasted Red, White)
101. Houdan – (Mottled, White)
102. Ko Shamo – (Wheaten)
103. La Flèche – (Black)
104. Malay – (Black, Black Breasted Red, Red Pyle, Spangled, Wheaten, White)
105. Polish – (Black Crested White, Golden, Silver, White, White Crested Black, White Crested Blue)
106. Shamo – (Black, Black Breasted Red, Dark, Wheaten)
107. Sicilian Buttercup
108. Sumatra – (Black, Blue)
109. Yokohama – (Red Shoulder, White)

BANTAM GAME AND GAMES BREEDS

110. American Game – (Birchen, Black, Black Breasted-Red, Blue, Blue Red, Brassy Back, Brown Red, Golden Duckwing, Red Pyle, Silver Duckwing, Wheaten, White)
111. Modern Game – (Birchen, Black Red, Brown Red, Duckwing, Pyle)
112. Old English Game – (AOC, Birchen, Black, Black-Breasted Red, Blue-Red, Brown-Red, Creole, Golden Duckwing, Lemon-Blue, Red Pyle, Self Blues, Silver Duckwing, Spangled, Wheaten, White)

DUCKS

Prizes: 1st - \$3.00; 2nd - \$2.00; 3rd - \$1.00

Class:

- | | | |
|--------------|----------------|---------------|
| 1. Old Drake | 3. Old Pair | 5. Young Duck |
| 2. Old Duck | 4. Young Drake | 6. Young Pair |

Lot:

113. Heavy Weight Breeds
a. Aylesbury
b. Muscovy – (Black, Blue, Chocolate, White)
c. Pekin
d. Rouen
e. Saxony
f. Silver Appleyard
114. Medium Weight Breeds
a. Buff
b. Cayuga – (Black)
c. Crested – (Black, White)
d. Swedish – (Blue)
115. Light Weight Breeds
a. Campbell – (Khaki)
b. Magpie – (Black and White, Blue and White)
c. Runner – (Black, Buff, Chocolate, Cumberland Blue, Fawn and White, Gray, Penciled, White)
d. Welsh Harlequin – (Silver)
116. Bantam Breeds
a. Call – (Blue, Blue Fawn, Buff, Butterscotch, Chocolate, Gray, Pastel, Snowy, White)
b. East Indie – (Black)
c. Mallard – (Gray, Snowy)

GOOSE BREEDS

Prizes: 1st - \$3.00; 2nd - \$2.00; 3rd - \$1.00

Class:

- | | | |
|---------------|-----------------|---------------|
| 1. Old Gander | 3. Young Gander | 5. Old Pair |
| 2. Old Goose | 4. Young Goose | 6. Young Pair |

Lot

117. Heavy Weight Breeds
a. African – (Brown, White)
b. Embden – (White)
c. Toulouse – (Buff, Gray)
118. Medium Weight Breeds
a. American Buff
b. Pilgrim – (Sex-linked)
c. Saddleback Pomeranian – (Buff, Gray)
d. Sebastopol
e. Steinbacher – (Blue)
119. Light Weight Breeds
a. Canada – (Eastern)
b. Chinese – (Brown, White)
c. Egyptian – (Brown)
d. Tufted Roman – (White)

TURKEY BREEDS

Prizes: 1st - \$3.00; 2nd - \$2.00; 3rd - \$1.00

Class:

- | | | |
|------------------|-----------------------------------|-----------------------------------|
| 1. Adult Gobbler | 3. Adult Pen (1 male & 2 Females) | 5. Young Hen |
| 2. Adult Hen | 4. Young Gobbler | 6. Young Pen (1 male & 2 Females) |

Lot

- | | | |
|-----------------------------|-------------------|------------------|
| 120. Beltsville Small White | 123. Bronze | 126. Slate |
| 121. Black | 124. Narragansett | 127. White |
| 122. Bourbon Red | 125. Royal Palm | 128. Wild Turkey |

PIGEON BREEDS

Prizes: 1st - \$1.00; 2nd - \$.75; 3rd - \$.50

129. Pair of Pigeons (Fancy Types)

130. Pair of Pigeons (Home/Sporting Types)

131. Pair of Pigeons (Squab Types)

132. Pair of Pigeons (Utility Types)

OTHER BIRD BREEDS

Prizes: 1st - \$3.00; 2nd - \$2.00; 3rd - \$1.00

Class:

- | | | |
|--------------------|-----------------|-------------|
| 1. Breeding Male | 3. Young Male | Lot |
| 2. Breeding Female | 4. Young Female | 133. Dove |
| | | 134. Guinea |

Lot

- | | | |
|----------------|---------------|------------|
| 135. Partridge | 137. Pheasant | 139. Other |
| 136. Peacock | 138. Quail | |

DIVISION G – RABBITS

Rose Klaven, Superintendent, 686-3039

Entries – 9 a.m. - 6 p.m.

Early Entries Call Superintendent

Prizes: 1st - \$10.00; 2nd - \$7.50; 3rd - \$5.00

RULES AND REGULATIONS

Rabbits shall be free from any infections and communicable disease. We reserve the right to turn away any animal that appears to be ill. Rabbits do not need health certificates but should be tattooed in the left ear for ID purposes. Limit of two (2) entries per lot, per class, per variety. Feed will be provided for rabbits, and they will be fed and watered. Limit of 3 rabbits per cage with exception of doe and litter (bunnies under 6 weeks of age will not be allowed without mother doe). Does with litter under three (3) weeks of age will NOT be allowed. For Sale signs may not be displayed until judging is completed on Friday. Rabbits may not be removed from the barn until the official release time on Sunday or approved by the superintendent, this includes sale rabbits. **Entry fee is \$.50 for each rabbit and/or \$1.00 for each pen of rabbits.**

Lots 1-5 are 4-Class Rabbits (under 9-1/2#)

Lot 1 – Senior Buck (6 months and older)

2 – Senior Doe

3 – Junior Buck (under 6 months of age)

4 – Junior Doe

5 – Doe and Litter - All 4 classes will be judged together.

Lots 6-12 are 6-Class Rabbits (over 9-1/2#)

6 – Senior Buck (8 months and older)

7 – Senior Doe

8 – Intermediate Buck (over 6 and under 8 months of age)

9 – Intermediate Doe

10 – Junior Buck (under 6 months of age)

11 – Junior Doe

12 – Doe and Litter - All 6 classes will be judged together.

ALL MEAT RABBITS

Lot 13 – Single Fryer (under 70 days of age and 3-1/2 to 5 pounds)

14 – Meat Pen of 3 Fryers (should match in breed, color and size, under 70 days of age, 3-1/2 to 5 pounds)

15 – Roaster (under 6 months and 5-1/2 to 8 pounds)

16 – Stewer (over 6 months and over 8 pounds)

17 – Baker (over 8 months of age and over 8 pounds)

Note: No kittens or other pets will be sold in the rabbit barn.

4-CLASS – UNDER 9 POUNDS IDEAL ADULT WEIGHT

Class 1 – American Fuzzy Lop

2 – Angora, English

3 – Angora, French

4 – Britannia Petite

5 – Dutch

6 – English Spot

7 – Florida White

8 – Havana

9 – Himalayan

10 – Jersey Woolly

11 – Lilac

12 – Lion Head

13 – Lop Holland

14 – Lop, Mini

15 – Mini Rex

16 – Netherland Dwarf

17 – Polish

18 – Rex

19 – Silver Marten

20 – Tan

21 – Doe and Litter

22 – Crossbred

6-CLASS – OVER 9 POUNDS IDEAL ADULT WEIGHT

Class 23 – Californian

24 – Checkered Giant

25 – Flemish Giant

26 – Lop, English

27 – Lop, French

28 – New Zealand

29 – Satin

30 – Silver Fox

31 – Creme d'Argent

32 – Hotot de Blanc

33 – Doe and Litter

34 – Crossbred

DIVISION G – CAVY (GUINEA PIG)

Superintendent: Rose Klaven 218-686-3039

Prizes: 1st - \$10.00; 2nd - \$7.50; 3rd - \$5.00

RULES AND REGULATIONS

Cavies shall be free from any infections and communicable disease. We reserve the right to turn away any animal that appears to be ill. Pellet feed will be supplied, cavies will be fed and watered by barn staff. If special food is needed, please supply it for your animal. Limit of two (2) entries per lot, per class, per variety. For Sale signs may not be displayed until judging is completed on Friday. Cavies may not be removed from the barn until the official release time on Sunday or approved by the superintendent, this includes sale cavies. **Entry fee is \$.50 per animal and/or \$1.00 for each pen.**

Lot 1. Senior Boar – over 6 months old and over 32 oz

2. Senior Sow – over 6 months old and over 32 oz

3. Intermediate Boar – up to 6 months old and between 22 and 32 oz

4. Intermediate Sow – up to 6 months old and between 22 and 32 oz

5. Junior Boar – up to 4 months old and between 12 and 22 oz

6. Junior Sow – up to 4 months old and between 12 and 22 oz

Class 1 – Abyssinian

2 – Abyssinian Satin

3 – American

4 – American, Satin

5 – Peruvian

6 – Peruvian Satin

7 – Silky

8 – Silky Satin

9 – Teddy

10 – Teddy Satin

11 – White Crested

12 – Crossbred



Pennington Co. Demolition Derby
July 19, 2026
Thief River Falls, MN

4:30pm Start Time
 Pits Open: 1pm-3:30pm

WFO
Derby Promotions

Tyler Miller
 218.686.7488

Rules on Facebook @wforderbypromotionrules.

Full Size Unified
 \$1800- \$800- \$400

Limited Weld
 \$1800- \$800- \$400

Compacts
 \$1400- \$700- \$300

***NEW CLASS* 80's and Newer Stock**
 \$1400-\$700- \$300

MWFA
 \$800- \$400- \$200

Lawnmowers
 \$300- \$200- \$100

Over \$12,500
 in payouts!

Styles By Amy

"The Most Fun
You Can Legally
Have With Hair"



Amanda



Tanya



Whitney



Amy



Patti



Chantal



Meyah



Andi

311 3rd Street East • (218) 681-3722 • Thief River Falls

**Hot Eats
Cool Treats
Eat-In
Drive-Thru**



Dairy Queen

700 Hwy. 32 S.
Thief River Falls, MN
(218) 681-3007

**FREE
SHUTTLE
ON THE
FAIR-
GROUNDS**
Catch a Ride
from Parking
Lots to Buildings
and Carnival



**Residential • Commercial
• Industrial**

• Heating • Air Conditioning
• Ventilation
Gas Fireplace Showroom

1902 Hwy. 32 S., Thief River Falls, MN 56701
(218) 681-4433 • 24-HOUR SERVICE

www.brodins.com • Email: comfort@brodins.com



Serving The Area Since 1951

1345 Hwy 32 S • PO Box 757 • lesssanitation.com

PEDAL PULL



**Sunday
1:00 P.M.**

**In Front
Of Arena**

Registration
starts at noon

DIVISION H – HORSES

Superintendents: Miranda Carlson (218)-686-5185 or Miranda.nelson@yahoo.com or EmmaRae Carlson 218-684-0723

Pre-Registration is required to stall and show at the fair. Please contact the above Superintendent before July 1st, so stalling arrangements and stall assignments can be made. There will only be stalls available for pre-registered horses. A limited number of stalls are available for open-class horses. To participate in our show, you must stall your horse at the fair and must arrive before 5 pm on 7/16/26 and stay until 5 pm on 7/19/26. We will have online registration for the Open Class horse show, and it must be completed before July 1st.

Horses are not allowed on the grounds without a copy of a current Negative Coggins test

No Stallions 2 years or over will be allowed on the grounds.

The Superintendent reserves the right to combine or split classes if numbers in lots warrant it. A horse may only be entered under one class type for Halter classes. Riders can only show in one age group. All horses stalled at the fair must be shown. Kids 18 & under must always wear a helmet while riding their horses. Pee Wee classes are walk/Trot

Rider Age divisions:

Pee Wee 11 & under (Walk Trot)
Senior 19 and over (Walk, Trot, Lope)

Junior 12 - 15
Senior+ 35 & over Walk Trot

Intermediate 16 -18

Premiums	1st	2nd	3rd	4th	5th
	30.00	25.00	20.00	15.00	10.00

Saturday and Sunday Fair open class horse show is Only for Horses stalled at the fair.

Shows will start at 9 am both Saturday and Sunday. Riders 18 & under must wear a helmet.

Saturday, July 18th classes:

- Class 1 – Registered Stock horse breeds (QH, Appaloosa, Paint)
2 – Registered Pleasure type breeds (Arabian, Morgan, Tennessee walker)
3 – Registered Ponies 54" and under
4 – Grade (All unregistered or other breed types)
5 – Riding classes- All breeds shown together (lots 7-31)

- Lot 1 – Weanlings 2 – Yearlings 3 – Mares, two years old
4 – Geldings, two years old (Junior Grand Champion and Reserve Champion chosen from first and second place of winners in lot 4 of all Registered stock, pleasure type, ponies and Grade Junior horses)
5 – Mares, three years old and over (Grand Champion and Reserve Champion Mare chosen from first and second place winner in lot 5 of all Registered stock, pleasure type, ponies, and grade mares 3 & over)
6 – Geldings, three years and over (Grand Champion and Reserve Champion Gelding chosen from first and second place winner from in lot 6 of all Registered stock, pleasure type, ponies, and grade Geldings 3 & over)

The following lots are performance classes with all breeds judged together (walk trot cannot show in loping classes)

- | | |
|------------------------------------------------------------------------|----------------------------------------------------------------|
| 7- Showmanship- Pee Wee 11 & under | 28- Pee Wee Walk / Trot Western Horsemanship- rider 11 & under |
| 8- Showmanship- Junior 12 – 15 years | 29- Western Horsemanship- JR - rider - 12 – 15 years |
| 9- Showmanship- Intermediate 16-18 years | 30- Western Horsemanship – INT- rider 16-18 years |
| 10- Showmanship- Senior 19 and over | 31- Western Horsemanship – SR- rider 19 and over |
| 11- Lead Line- (Child 7 years and under) | 32- Western Horsemanship – SR+ rider 35 & over Walk Trot |
| 12- Pee Wee Walk / Trot – Hunter Under Saddle - rider 11 & under | 33- Pee Wee Walk / Trot Trail - rider 11 & under |
| 13- Hunter Under Saddle - Jr - rider - 12 – 15 years | 34- Trail – JR- rider - 12 – 15 years |
| 14- Hunter Under Saddle- Int- rider 16-18 years | 35- Trail – INT- rider 16-18 years |
| 15- Hunter Under Saddle – Sr- rider 19 and over | 36- Trail – SR- rider 19 and over |
| 16- Hunter Under Saddle – SR+ rider 35 & over Walk Trot | 37- Trail – SR+ rider 35 & over Walk Trot |
| 17- Pee Wee Walk / Trot – Equitation - rider 11 & under | 38- Pee Wee Walk / Trot Ranch Pleasure- 11 & under |
| 18- Equitation – JR - rider - 12 – 15 years | 39- Ranch Pleasure – JR - rider 12 – 15 years |
| 19- Equitation – INT - rider 16-18 years | 40- Ranch Pleasure – INT - rider - 16 – 18 years |
| 20- Equitation– Sr- rider 19 and over | 41- Ranch Pleasure – SR - rider - 19 & over |
| 21- Equitation– SR+ rider 35 & over Walk Trot | 42- Ranch Pleasure– SR+ rider 35 & over Walk Trot |
| 22- Pee Wee Walk/Trot western pleasure- rider 11 & Under | 43- Pee Wee Walk / Trot Ranch Riding- 11 & under |
| 23- Western Pleasure- JR - rider - 12 – 15 years | 44- Ranch Riding – JR - rider - 12 – 15 years |
| 24- Western pleasure – INT- rider 16 – 18 years | 45- Ranch Riding – INT - rider - 16-18 years |
| 25- Western pleasure – SR- rider 19 and over | 46- Ranch Riding – SR - rider - 19 & over |
| 26- Western pleasure – SR+ rider 35 & over Walk Trot | 47- Ranch Riding – SR+ rider 35 & over Walk Trot |
| 27- Western Pleasure Junior Horse – The horse must be 5 years or under | |

Sunday, July 19th Game classes (show only for participants stalling horses at the fair):

18 and under must wear a helmet:

- | | |
|-----------------------------------------------|-------------------------------------------------|
| 48- Barrels - lead line rider 7 & under | 60- Pole Weaving – SR+ rider 35 & over |
| 49- Keyhole - lead- line rider 7 & under | 61- Jumping Figure 8 Pee Wee rider 11 & under |
| 50- Pole weaving - Lead line rider 7 & under | 62- Jumping Figure 8 JR - rider - 12 – 15 years |
| 51- Keyhole – Pee Wee rider 11 & under | 63- Jumping Figure 8 INT- rider 16 – 18 years |
| 52- Keyhole - JR - rider - 12 – 15 years | 64- Jumping Figure 8 Sr- rider 19-34 |
| 53- Keyhole – INT- rider 16-18 years | 65- Jumping Figure 8 – SR+ rider 35 & over |
| 54- Keyhole – SR- rider 19- 34 | 66- Barrels Pee Wee rider 11 & under |
| 55- Keyhole – SR+ rider 35 & over | 67- Barrels JR - rider - 12 – 15 years |
| 56- Pole Weaving – Pee Wee rider 11 & under | 68- Barrels INT- rider 16-18 years |
| 57- Pole Weaving - JR - rider - 12 – 15 years | 69- Barrels Sr- rider 19-34 |
| 58- Pole Weaving – INT- rider 16-18 years | 70- Barrels – SR+ rider 35 & over |
| 59- Pole Weaving – Sr- rider 19-34 | |

Garden Valley Video Gaming Trailer Stop in and Play Videos

DIVISION I – DOGS

Superintendents: Dustin Berg 218-230-6159, Anna Zoller 612-296-9223 ~ Wednesday, July 18, 9 am

Prizes: 1st – \$10.00; 2nd – \$7.50; 3rd – \$5.00

PLEASE REGISTER BEFORE EACH SHOW 4-H DOG SHOW FOLLOWED BY OPEN SHOW AT THE BUS GARAGE. All dogs must have rabies, parvo and distemper shots and you must bring proof of vaccinations to the show. All dogs must be over 4 months of age. Once you have earned a blue ribbon, you must move up to the next level.

Class 1 – Obedience

- Lot 1. Foundation – Heel on leash, sit for exam in heel position, recall no finish, sit stay for 10 seconds
2. Beginner – On leash – heel and figure 8, sit for exam on leash, stand in heel position, recall on leash finish, down in heel position for 5 seconds and sit stay 20-foot line for 10 seconds
3. Graduate beginner (won a blue ribbon in the beginner but not completed novice training) – On leash – heel and figure 8, sit for exam on leash, heel free, recall off leash, sit stay drop leash across ring for 20 seconds and down stay drop leash across ring for 20 seconds
4. Novice – On leash – heel and figure 8, stand for exam off leash, heel free, recall off leash, group long sit drop leash 1 minute and group long down – drop leash 1 minute
5. Graduate Novice – On leash – heel and figure 8, command discrimination in heel position, moving drop on recall, recall off leash, dumbbell fetch – 30 seconds to have dog take dumbbell and 5 second hold, recall over high jump, recall over broad jump and stand stay get your leash
6. Pre-open (all exercises performed off leash) – Heel free and figure 8, command discrimination, drop on recall, retrieve on flat, retrieve over high jump, broad jump and stand stay get your leash 15 feet
7. Open (all exercises performed off leash) – Heel free and figure 8, command discrimination, drop on recall, retrieve on flat, retrieve over high jump, broad jump and stand stay get your leash 15 feet
8. Graduate Open (all exercises performed off leash) – Signal exercise, scent discrimination, directed retrieve, heeling stand and exam and go out 20 feet and directed jumping
9. Pre-utility (all exercises performed off leash) – Signal exercise, scent discrimination, directed retrieve, moving stand and exam and directed jumping
10. Utility (all exercises performed off leash) – Signal exercise, scent discrimination, directed retrieve, moving stand and exam and directed jumping
11. Veterans (for dogs that are too old/unfit to jump) – On leash – heel and figure 8, stand for exam off leash, heel free, recall off leash, sit stay get your leash 30 feet, group long sit on leash – 1 minute, group long down – stay leash 1 minute
12. Brace (2 dogs) – Heel and figure 8 on leash, stand for exam off leash, recall off leash, sit stay get your leash 20 feet, group sit – stay on leash – 1 minute, group down stay on leash – 1 minute
13. 4 Dog Team (working together in training their dogs to perform as a unit) – Heel and figure 8 on leash, stand for exam off leash, team uniformity, recall off leash – dogs will be called simultaneously, group sit on leash 1 minute, group down stay on leash 1 minute

Class 2 – Rally (combines the fast pace of Agility with the exercises of obedience)

14. Foundation – halt-sit, right turn, left turn, about turn-right, 270 degrees right, 270 degrees left, 360 degrees right, 360 degrees left, call front-forward, slow pace, fast pace, normal pace, serpentine weave, figure 8, diagonal right and diagonal left
15. Beginner – halt sit down, about U turn, call dog front finish any direction, straight figure 8 weave twice, halt and walk around dog, halt-down-walk around dog, halt left-turn forward, halt-right turn forward, call front-return to heel, offset serpentine right, offset serpentine left
16. Novice – call dog front finish any direction, moving side step, spiral right dog outside, spiral left dog inside, halt 1,2,3 step forward, call front-1,2,3 step backward, stop and down, halt- fast forward from sit, left about turn, halt-slow down forward from sit, loop right and loop left
17. Graduate Novice – call front finish right forward, call front finish left forward, call front finish right forward, call front finish left forward,
18. Intermediate – halt-stand dog walk around dog, halt-90 degree pivot right and left halt, offset figure 8, halt side step right halt, halt-call dog front finish left and right, halt-pivot 180 degree pivot left and right, halt-leave dog-2 steps-call to heel forward, dog circles forward left and right, halt-step in front-finish left and finish right.
19. Advanced – preformed off leash and may include any hand signals from foundations class, pre-novice beginner, novice, graduate novice and intermediate. It must also include send over jumps-handler passes by.
20. Pre-Excellent – preformed off leash and may include any hand signals from foundations class, pre-novice beginner, novice, graduate novice, intermediate and advanced. Must also include halt-stand-down, halt-stand-sit, moving down-walk around dog, down while heeling, double left about turn, about turn right-U turn, U turn about right turn, stand-right turn-forward, stand-left turn-forward and call.
21. Excellent – preformed off leash and may include any hand signals from foundations class, pre-novice beginner, novice, graduate novice, intermediate, advanced and pre-excellent. Must also include moving stand-walk around dog, backup 3 steps, stand while heeling, stand-leave dog-sit dog-call dog-call front-finish, stand-leave dog-down dog-call dog-call front-finish, send to jump, halt-dog circles right-sit and sit stay.
22. Pre-Master – may include signs from all previous levels. Must also include halt-recall over jump-finish-right turn-forward, include halt-recall over jump-finish-left turn-forward, include halt-recall over jump-finish-about turn-forward, backup 3 steps-stand and leave-call to finish-forward, Dog spins right and left-forward, Double left about turn-left and right turn, halt-leave-recall-finish left and right-sit, dog circles around handler-handler circles left and stand-leave 2 steps-call to heel.
23. Master – may include any signs from previous classes. Must also include call front-move 2 steps left and right-finish forward, halt-send away sit-return follow arrow right, halt-send away sit-return follow arrow left, halt-send away sit-return follow arrow forward, backup 3 steps-left and right backup 1 or 2 steps-forward, cloverleaf, side by side 360 degree right circle and side by side 360 degree left circle.
24. Veterans – this class is for dogs that are too old to compete and will follow the intermediate level class.

Class 3 – Agility (must complete an obstacle course designed and judged on speed and accuracy)

25. Beginner – hurdles, pipe tunnel, pause table and a-frame
26. Novice – hurdles, pipe tunnel, pause table, a-frame and tire jump
27. Intermediate – hurdles, pipe tunnel, pause table, a-frame, tire jump, dog walk, long jump and weave poles
28. Advanced – hurdles, pipe tunnel, pause table, a-frame, tire jump, dog walk, long jump, weave poles, seesaw, one-bar jump and double jump
29. Expert – hurdles, pipe tunnel, pause table, a-frame, tire jump, dog walk, weave poles, seesaw, one-bar jump, double jump and triple jump or long jump

Class 4 – Jumps (obstacle course that is geared towards the dog's ability to jump)

30. Beginner – hurdles and tunnels
31. Novice – hurdles, tunnels and tire jump
32. Advanced – hurdles, tunnels, tire jump, one-bar jumps and double jump
33. Expert - hurdles, tunnels, tire jump, one-bar jumps, double jump and triple jump

Class 5 – Showmanship

Judged entirely on the one's ability to groom and show their dog by the breed standards of that dog.

A crossbred dog should be shown and groomed by the breed standards it resembles.

34. Junior Novice Showmanship – 13 years and under
35. Senior Novice Showmanship – 14 years and older
36. Junior Open Showmanship – 13 years and under (must have won a blue ribbon in novice showmanship)
37. Senior Open Showmanship – 14 years and older (must have won a blue ribbon in novice showmanship)
38. Adult Showmanship – Handler age 20+

FALLS TOWING

218-684-5100

THIEF RIVER FALLS, MN

FALLSTOWING.COM



Best Of The NORTHWEST
2025 1st Place



1ST PLACE: BEST SMALL BUSINESS
1ST PLACE: BEST LAWN CARE
1ST PLACE: BEST CUSTOMER SERVICE
1ST PLACE: BEST TREE REMOVAL
1ST PLACE: BEST PLACE TO WORK

www.genestrif.com

(218) 689-9422





BANNERS / SIGNAGE
TROPHIES / AWARDS / PLAQUES / MEDALS
CUSTOM APPAREL / JERSEYS
LASER ENGRAVING / VINYL GRAPHICS
PROMOTIONAL PRODUCTS

www.usptrf.com

Highway 59 North • 218-681-5486 • 800-562-0028 • Thief River Falls



Norwegian Heritage Day

Sat., July 18

in the Tri-Valley Bus Garage

10 am - 12 Noon
Lefse Making & Sales
Vendors of Various
Norwegian Items for sale

12 noon - 1 pm **Lunch Served**
by the Sons of Norway
Featuring Open Face Sandwiches,
Rommegrot, Waffles
w/Strawberries, Pickled Herring,
Cookies, Coffee & Lemonade




DIVISION J – ADULT AGRICULTURE DIVISION JY – YOUTH AGRICULTURE

16 and Under
Tom Scholin, 964-5268

Exhibits in west end of Huck Olson Arena. Enter Wednesday, July 15, 10 am to 5 pm.
Call for questions about displaying and/or preservation of exhibit.

SELECTION POINTERS

SMALL GRAINS

UNIFORMITY – As nearly as possible, every kernel in the sample should correspond to every other kernel in size, shape and color.

PURITY – A show sample should be absolutely free from (1) Seeds of other grains; (2) Weed Seeds; (3) Dirt, straw, sticks, chaff, etc.

PLUMPNESS OF KERNEL – Indicated (1) Weight per bushel; (2) Yield; (3) Strength of breeding.

CLOVER

PLUMPNESS OF KERNEL – Indicates (1) Weight per in size and shape, meet favor with the judges.

MIXTURE – No other seeds should be in the sample and all kinds of foreign matter (weeds, seeds, dirt, etc.) are objectionable.

COLOR – Bright cheerful lustre is preferred to dull dead color.

POTATOES

1. Do not wash exhibits. Brushing with a soft brush will remove the soil and leave the skin in its natural condition.

2. Select the exhibit at digging time if possible. Wrap each potato in paper as soon as selected, and store in a dry, dark, cool cellar.

3. Select the tubers of the average size for the variety that are in uniform size.

4. Select tubers of good type for the variety. Round blunt or block ends are characteristic of most varieties. Avoid pointed tubers, or irregular shapes.

5. Select only clean, bright specimens or those free from scab, black scurf, stems and rots, mechanical injury and sunburn.

6. Select full number as called for in the premium list, and correctly label the sample.

CLASS 1 – SEEDS

CLASS 2 – GRAINS (SHEAFS)

Same Lots for Both Classes

Profit by your experience by seeing the show and getting the judge's reason for placing.

All grain stems leaves stripped off. Seed samples need to be one quart.

Sheaf samples not less than three inches in diameter at the base of the sheaf. Grain samples from previous year's crop.

Sheaf samples from present year's crop. 3 stalks make a corn, sunflower or soybean sheaf.

1st – \$4.00; 2nd – \$3.00; 3rd – \$2.00

- | | | |
|------------------------------------------|--------------------------------------------|-------------------------------------------------------------------------|
| Lot 1 – Alfalfa | 16 – Pinto Beans | 28 – Winter Wheat |
| 2 – Alsike Clover | 17 – Red Clover Seed | 29 – Orchard Grass |
| 3 – Barley | 18 – Red Top | 30 – Crested Wheat |
| 4 – Blue Grass | 19 – Rye | 31 – Safflower |
| 5 – Birdsfoot trefoil | 20 – Soybeans - 6 stalks with roots | 32 – Fescue |
| 6 – Buckwheat | 21 – Sunflowers, oil - 3 stalks with roots | 33 – Hairy Vetch Clover |
| 7 – Bromus Grass | 22 – Sunflowers, confectionary - 3 | 34 – Crimson Clover |
| 8 – Canary Grass | 23 – Sweet Clover | 35 – Sorghum |
| 9 – Canola | 24 – Peas, Field | 36 – Navy Bean |
| 10 – Corn, Shelled | 25 – Timothy | 37 – Perennial Rye Grass |
| 11 – Corn, 6 ears or 3 stalks with roots | 26 – Wheat, Durum | 38 – Other |
| 12 – Flax | 27 – Wheat, Spring | 39 – Crop Art, Wheat Weaving, Corn Husk, Seed Plaques, Cone Craft, etc. |
| 13 – Millet | | |
| 14 – Mustard | | |
| 15 – Oats | | |

CLASS 3 – HAY, SILAGE, OR HAYLAGE

Exhibit 3 inch slice of a hay bale or an equal amount of stalk or chopped hay.

Use plastic containers. Exhibit one gallon of silage in a plastic container. Silage is about 65 percent moisture.

1st – \$4.00; 2nd – \$3.00; 3rd – \$2.00

- Lot 1 – Legume Hay
2 – Grass Hay
3 – Mixed Hay
4 – Legume Silage
5 – Grass Silage
6 – Corn Silage
7 – Haylage (about 50% moisture)

CLASS 4 – GARDEN ROOT CROPS

1st – \$3.00; 2nd – \$2.00; 3rd – \$1.00

- | | |
|---------------------------------------------|--------------------------------------------|
| Lot 1 – Beets, table, 3 | 12 – Parsnips, 3 |
| 2 – Carrots, long, 3 | 13 – Potatoes, red, 6 tubers |
| 3 – Carrots, half long, 3 | 14 – Potatoes, white, 6 tubers |
| 4 – Carrots, short, 3 | 15 – Potatoes, yellow flesh, 6 tubers |
| 5 – Garlic, 3 | 16 – Potatoes, other, 6 tubers |
| 6 – Horseradish, 3 | 17 – Radishes, round, 6 |
| 7 – Onions, yellow, 3 (not peeled) | 18 – Radishes, long, 6 |
| 8 – Onions, white, 3 (not peeled) | 19 – Rutabagas, 3 |
| 9 – Onions, pickling, 6 (not peeled) | 20 – Salsify, 3 |
| 10 – Onions, green bunching, 6 (not peeled) | 21 – Turnip, 3 |
| 11 – Onions, purple, 3 (not peeled) | 22 – Longest carrot (ribbon placings only) |

CLASS 5 – OTHER GARDEN CROPS

1st – \$3.00; 2nd – \$2.00; 3rd – \$1.00

- | | |
|----------------------------------------|-----------------------------------------|
| Lot 1 – Asparagus, 3 spears | 31 – Rhubarb, 6, without leaves |
| 2 – Beans, green pod, plate of 12 | 32 – Spinach, 6 leaves |
| 3 – Beans, yellow pod, plate of 12 | 33 – Squash, summer, 1 |
| 4 – Beans, purple pod, plate of 12 | 34 – Squash, winter, 1 |
| 5 – Beans, lima, plate of 12 | 35 – Swiss Chard, 3 stalks |
| 6 – Broccoli, 1 head | 36 – Tomatoes, ripe, 3 |
| 7 – Cauliflower, 1 head | 37 – Tomatoes, green, 3 |
| 8 – Cabbage, early, 1 head | 38 – Cherry Tomatoes, 12 |
| 9 – Cabbage, late, 1 head | 39 – Watermelon, 1 |
| 10 – Cabbage, purple, 1 head | 40 – Zucchini, 1 |
| 11 – Celery, 3 stalks | 41 – Herbs - 3 stems |
| 12 – Citron, 3 | a. Chives, bunch 1 inch in diameter |
| 13 – Corn, sweet, 3 ears | b. Dill |
| 14 – Corn, sweet, 3 stalks | c. Parsley |
| 15 – Popcorn, 3 ears | d. Basil |
| 16 – Cucumbers, slicers, 3 | e. Mint |
| 17 – Cucumbers, ripe, 3 | 1. Spearmint |
| 18 – Cucumbers, pickling, 6 | 2. Peppermint |
| 19 – Eggplant, 1 head | 3. Sweet Mint |
| 20 – Endive, 1 head | 4. Other |
| 21 – Kale, 1 leaf | f. Cilantro |
| 22 – Kohlrabi, 3 | g. Oregano |
| a. White | h. Lavender |
| b. Purple | i. Chamomile |
| c. Large variety - 1 | j. Sage |
| 23 – Lettuce, leaf, 6 | k. Rosemary |
| 24 – Lettuce, head, 1 | l. Hyssop |
| 25 – Muskmelon, 1 | 42 – Best collection of garden products |
| 26 – Peas, early, plate of 12, pod | 43 – Best collection of herbs |
| 27 – Peas, main crop, pod, plate of 12 | 44 – Best collection of squash |
| 28 – Edible podded peas, plate of 12 | 45 – Best freak or novelty vegetable |
| 29 – Peppers, 3 | 46 – Scarecrow for the garden 4-6 ft |
| a. Sweet Bell | 47 – Vegetable Sculpture |
| b. Sweet, other | a. Youth 13 and under |
| c. Jalapeno | b. youth 14-18 |
| d. Other Hot Peppers | c. adult |
| e. Decorative | 48 – Other |
| 30 – Pumpkin, 1 | |

CLASS 6 – FRUITS

1st – \$3.00; 2nd – \$2.00; 3rd – \$1.00

1 Grand Champion For Each Class

- | | |
|--------------------------------------------------|----------------------------------------|
| Lot 1 – Currants, white, 5 stems | 13 – Best plate of late apples, 3 |
| 2 – Currants, red, 5 stems | 14 – Best plate named crabs, 10 |
| 3 – Currants, black, 5 stems | 15 – Best plate of plums, 10 |
| 4 – Raspberries, black, 1 pint | 16 – Best plate of ground cherries, 20 |
| 5 – Raspberries, red, 1 pint | 17 – Raspberry, wild, 1 pint |
| 6 – Gooseberries, 1 pint | 18 – Buffalo Berry, 1 pint |
| 7 – Strawberries, 1 pint | 19 – Cherry, 5 |
| 8 – Chokecherries, 1 stem | 20 – Black Walnuts, 10 |
| 9 – Best collection of grapes (3 varieties) | 21 – Pincherries, 12 |
| 10 – Grapes (1 cluster) | 22 – Blueberries, 12 |
| 11 – Best collection wild fruit at least 3 kinds | 23 – Juneberries, 12 |
| 12 – Best plate of early apples, 3 | 24 – Other |



WHAT DO LIVESTOCK HAVE IN COMMON?

THEY ALL LOVE

CORN & SOYBEANS!



Brought to you by the Pennington-Red Lake County Soybean & Corn Growers and their checkoffs.



DIVISION K – FLOWER DEPT. DIVISION L – YOUTH FLOWER DEPT.

Youth – Ages 16 and Under

Pennington County Master Gardeners, Superintendent

Contact People: Linda Helgeland 681-7633 or Kim Swanson 218-416-0385

Entries Taken From 10 A.M. to 5 P.M. Wednesday, July 15

Exhibitors please have itemized list of entries prior to entering. All exhibits must be grown by the exhibitor.

Grand Champion awarded in each class. No reserve champions awarded. Exhibits in west end of Huck Olson Arena.

FLOWER DEPARTMENT RULES

- All flowers **MUST** be grown by exhibitors or collected in the wild.
- An exhibitor may enter only one exhibit in any lot (unless they have each entry identified by variety name in adult division only).
- Exhibitors are required to show the exact number of specimens called for in the premium list.
- Furnish your own containers and water.
- No filler should be used other than in arrangement.
- For best display, condition all flowers.
 - Cut early in the morning or very late afternoon
 - Use a sharp knife, cut at a slant.
 - Place immediately in slightly warm water.
 - Remove all foliage below water line.
 - Let flowers stand in a cool place out of a draft.
 - Stems with sticky sap should be singed on cut side and sealed by placing lower end of stem in boiling water for one to two minutes. Such as dahlia, platycodon, etc.
 - Woody stems should be crushed to increase water intake.
 - Lilies shown as cut flowers should have pollen left on. In an arrangement lily pollen sacs may be removed.
 - For more exhibiting tips see the Exhibiting and Judging Handbook published by the Minnesota Historical Society or <http://www.northerngardener.org/classes/judges>
- Try and put variety name on exhibit.
- Dish gardens are similar to planters, except they create a miniature landscape, tell a story or set a mood, includes trough gardens.

SPECIAL AWARDS - ADULT SWEEPSTAKES AWARD

- | | |
|---------------------------------------------------|---------------|
| 1 Point each entry
blue ribbon | 3 Points each |
| 2 Points each red ribbon
grand champion ribbon | 5 Points each |

**A \$10.00 gift certificate for exhibitor with the most points from MOC-CASIN GARDEN CLUB
ARTISTIC ARRANGEMENT AWARD — \$10.00 gift certificate from
PENNINGTON CO. MASTER GARDENERS**

LIBRARY DAY


at the Pennington County Fair

Saturday, July 18

South Side of the Huck

11 am - 3 pm

Activities Stories Face Painting





\$3 Off Family (16") Pizza

\$2 Off Large (14") Pizza

\$1 Off Medium (12") Pizza

218-683-5129

LOCALLY OWNED & OPERATED

ORDER AT PAPAMURPHYS.COM

We make it fresh. You bake it to perfection. expires 8/2026

Open: 10:30 AM - 8:00 PM
Seven Days a Week

THIEF RIVER FALLS • 218-683-5129 • 1845 Hwy 59 S • next to Anytime Fitness

Kids ~ Come Play In The SOYBEAN PIT

Located Between the
Hamre Barn and the Cattle Barn

Sponsored by Pennington, Red Lake Co Soybean Growers Assoc. & K-Star Ag Services

SPECIAL AWARDS - YOUTH

Grand Champion youth in each class will receive \$5.00 from the Pennington County Master Gardeners.

CLASS 1 – CUT FLOWERS

1st – \$1.50; 2nd – \$1.00; 3rd – \$.50

- | | | |
|-------------------------------------------------------------------------------------------------------------------------------------------------------------------------------------------------------------------------------------------------------------------------------------------------------------------------------------------------------------------------------------------------------------------------------------------------------------------------------------------------------------------------------------------------------------------------------------------------------------------------------------------------------------------------------------------------------------------------------------------------------------------------------------------------------------------------------------------------------------------------------------------------------------------------------------------------------------------------------------------------------------------------------------------------------------------------------------------------------------------------------------------------------------------------------------------------------------------------------------------------------------------------------------------------------------------------------------------------------------------------------------------------------------------------------------------------------------------------------------------------------------------------------------------------------------------------------------------------------------------------------------------------------------------------------|--------------------------------------------------------------------------------------------------------------------------------------------------------------------------------------------------------------------------------------------------------------------------------------------------------------------------------------------------------------------------------------------------------------------------------------------------------------------------------------------------------------------------------------------------------------------------------------------------------------------------------------------------------------------------------------------------------------------------------------------------------------------------------------------------------------------------------------------------------------------------------------------------------------------------------------------------------------------------------------------------------------------------------------------------------------------------------------------------------------------------------------------------------------------------------------------------------------------------------------------------------------------------------------------------------------------------------------------------------------------------------------------------------------------------------------------------------------------------------------------------------------------------------------------------------------------------------------------------------------------------------------------------------------------------------------------------------------------------------------------------------------------------------------------------------------|-----------------------------------------------------------------------------------------------------------------------------------------------------------------------------------------------------------------------------------------------------------------------------------------------------------------------------------------------------------------------------------------------------------------------------------------------------------------------------------------------------------------------------------------------------------------------------------------------------------------------------------------------------------------------------------------------------------------------------------------------------------------------------------------------------------------------------------------------------------------------------------------------------------------------------------------------------------------------------------------------------------------------------------------------------------------------------------------------------------------------------------------------------------------------------------------------------------------------------------------------------------------------------------------------------------------------------------------------------------------------------------------------------------------------------------------------------------------------------------------------------------------------------------------------------------------------------------------------------------------------------------------------------|
| <p>Lot 1 – Achillea (2 stems)</p> <ol style="list-style-type: none"> Yellow Pearl Other <p>2 – Asters (2 blooms)</p> <p>3 – Baby's Breath (1 stem)</p> <ol style="list-style-type: none"> Annual Perennial <p>4 – Bachelor Buttons (2 stems)</p> <ol style="list-style-type: none"> Annual Perennial <p>5 – Calendula (3 blooms)</p> <p>6 – Campanula (2 stems)</p> <ol style="list-style-type: none"> Single Double <p>7 – Carnation (2 stems)</p> <p>8 – Chrysanthemums (2 stems)</p> <p>9 – Cleome (Spider Plant) (1 stem)</p> <p>10 – Columbine (2 stems)</p> <p>11 – Coreopsis (2 blooms)</p> <p>12 – Cosmos (2 blooms)</p> <ol style="list-style-type: none"> Yellow/Orange Pink Red Other <p>13 – Daisies (2 blooms)</p> <ol style="list-style-type: none"> Shasta Single Shasta double Small Gloriosa (Rudbeckia), single Gloriosa (Rudbeckia), double <p>14 – Dahlia</p> <ol style="list-style-type: none"> Ball (2 blooms) Cactus (1 bloom) Dwarf (2 blooms) Giant (1 bloom)(over 6 inches) Any Other <p>15 – Delphinium (1 spike)</p> <ol style="list-style-type: none"> Tall Miniature <p>16 – Dianthus (Pinks)</p> <ol style="list-style-type: none"> Single (2 stems) Double (2 stems) <p>17 – Echinacea (Coneflower) (2 blooms)</p> <p>18 – Echinops (Globe Thistle) (1 stem)</p> <p>19 – Feverfew (2 stems)</p> <p>20 – Forget-Me-Not (2 stems)</p> | <p>21 – Foxglove (Digitalis) (1 spike)</p> <p>22 – Gaillardia (2 blooms)</p> <p>23 – Gladioli</p> <ol style="list-style-type: none"> One Spike Collection (3 different color or varieties of spikes) Miniature (1 spike) <p>24 – Heleopsis (golden glow) (1 stem)</p> <p>25 – Hemerocallis (Day Lily, 1 scape)</p> <ol style="list-style-type: none"> Yellow Orange Other <p>26 – Hollyhocks (1 stalk)</p> <ol style="list-style-type: none"> Single Double <p>27 – Hosta - small, under 2" across, 3 leaves</p> <ol style="list-style-type: none"> Solid color Variegated <p>28 – Hosta - medium, 2"-5", 3 leaves</p> <ol style="list-style-type: none"> Solid color Variegated <p>29 – Hosta - large, over 5", 2 leaves</p> <ol style="list-style-type: none"> Solid color Variegated <p>30 – Hosta - giant, over 8", 1 leaf</p> <ol style="list-style-type: none"> Solid color Variegated <p>31 – Hydrangea (1 stem)</p> <p>32 – Larkspur (2 spikes)</p> <p>33 – Lavatera (1 stem)</p> <p>34 – Liatris (1 stalk)</p> <p>35 – Liquearia - (1 stem)</p> <p>36 – Lilies (1 stalk)</p> <ol style="list-style-type: none"> Outward Facing Upward Facing Downward Facing Other <p>37 – Marigold (2 blooms)</p> <ol style="list-style-type: none"> Large (over 3") Medium (Over 1-1/2" to 3") Small (1-1/2" and under) <p>38 – Monarda (Bee Balm) (2 stems)</p> <p>39 – Nasturtium (2 blooms)</p> <p>40 – Osteospermum (2 blooms)</p> <p>41 – Pansies (3 blooms)</p> <ol style="list-style-type: none"> Large (3" and over) | <ol style="list-style-type: none"> Medium (under 3") <p>42 – Petunia
(2 sprays - leave foliage on stems)</p> <ol style="list-style-type: none"> Single Double Miniature (Fantasy, Million Bells, Etc.) <p>43 – Phlox (1 stem)</p> <ol style="list-style-type: none"> Annual Perennial <p>44 – Poppies (2 blooms)</p> <ol style="list-style-type: none"> Single Double <p>45 – Roses</p> <ol style="list-style-type: none"> Hybrid tea (1 bloom) Floribunda (1 cluster) Shrub Rose (1 spray) Grandflora (1 stem) Collection
(3 different varieties) Miniature Rose (1 spray) <p>46 – Salvia (2 stems)</p> <p>47 – Scabiosa (2 blooms)</p> <p>48 – Snapdragon</p> <ol style="list-style-type: none"> Giant (1 spike) Any Other Variety (2 spikes) <p>49 – Strawflowers (2 blooms)</p> <p>50 – Sunflower (2 stems)</p> <p>51 – Sweet Peas (2 stems)</p> <p>52 – Sweet William (1 stem)</p> <p>53 – Verbena (2 stems)</p> <p>54 – Veronica - (1 stem)</p> <p>55 – Violas (2 stems)</p> <p>56 – Zinnias</p> <ol style="list-style-type: none"> Giant (1 bloom, 4" and over) Medium 2" - 4" (2 blooms) Pompon (2 blooms, 2" and under) Cactus (2 blooms) Others (2 blooms) <p>57 – Dried Specimen</p> <p>58 – Clematis (show about 1 foot spiraled around a dowel)</p> <p>59 – Cut Flowers Not Specified</p> <ol style="list-style-type: none"> Annual (1 stem) Perennial (1 stem) |
|-------------------------------------------------------------------------------------------------------------------------------------------------------------------------------------------------------------------------------------------------------------------------------------------------------------------------------------------------------------------------------------------------------------------------------------------------------------------------------------------------------------------------------------------------------------------------------------------------------------------------------------------------------------------------------------------------------------------------------------------------------------------------------------------------------------------------------------------------------------------------------------------------------------------------------------------------------------------------------------------------------------------------------------------------------------------------------------------------------------------------------------------------------------------------------------------------------------------------------------------------------------------------------------------------------------------------------------------------------------------------------------------------------------------------------------------------------------------------------------------------------------------------------------------------------------------------------------------------------------------------------------------------------------------------------|--------------------------------------------------------------------------------------------------------------------------------------------------------------------------------------------------------------------------------------------------------------------------------------------------------------------------------------------------------------------------------------------------------------------------------------------------------------------------------------------------------------------------------------------------------------------------------------------------------------------------------------------------------------------------------------------------------------------------------------------------------------------------------------------------------------------------------------------------------------------------------------------------------------------------------------------------------------------------------------------------------------------------------------------------------------------------------------------------------------------------------------------------------------------------------------------------------------------------------------------------------------------------------------------------------------------------------------------------------------------------------------------------------------------------------------------------------------------------------------------------------------------------------------------------------------------------------------------------------------------------------------------------------------------------------------------------------------------------------------------------------------------------------------------------------------|-----------------------------------------------------------------------------------------------------------------------------------------------------------------------------------------------------------------------------------------------------------------------------------------------------------------------------------------------------------------------------------------------------------------------------------------------------------------------------------------------------------------------------------------------------------------------------------------------------------------------------------------------------------------------------------------------------------------------------------------------------------------------------------------------------------------------------------------------------------------------------------------------------------------------------------------------------------------------------------------------------------------------------------------------------------------------------------------------------------------------------------------------------------------------------------------------------------------------------------------------------------------------------------------------------------------------------------------------------------------------------------------------------------------------------------------------------------------------------------------------------------------------------------------------------------------------------------------------------------------------------------------------------|

CLASS 2 – POTTED PLANTS

1st – \$2.00; 2nd – \$1.50; 3rd – \$1.00

Pots are measured at the top

- | | | |
|------------------------------------------------------------------------------------------------------------------------------------------------------------------------------------------------------------------------------------------------------------------------------------------------------------------------------------------------------------------------------------------------------------------------------------------------------------------------------------------------------------------------------------------------------------------------------------------------------------------------------------------------------------------------------------------------------------------------------------------------------------------------------|--------------------------------------------------------------------------------------------------------------------------------------------------------------------------------------------------------------------------------------------------------------------------------------------------------------------------------------------------------------------------------------------------------------------------------------------------------------------------------------------------------------------------------------------------------------------------------------------------------------------------------------------------------------------------------------------|--------------------------------------------------------------------------------------------------------------------------------------------------------------------------------------------------------------------------------------------------------------------------------------------------------------------------------------------------------------------------------------------------------------------------------------------------------------------------------------------------------------------------------------------------------------------------------------------------------------------------------------------------------------------------------|
| <p>Lot 1 – African Violet</p> <ol style="list-style-type: none"> single double <p>2 – Begonia</p> <ol style="list-style-type: none"> Fibrous <ol style="list-style-type: none"> Bedding Plant (wax) Angel or Dragon Wings Other Rex Hybrids Tuberous <ol style="list-style-type: none"> Upright Trailing Other <p>3 – Cactus</p> <ol style="list-style-type: none"> Large (over 6" pot) Small (6" pot and under) <p>4 – Coleus</p> <p>5 – Ferns</p> <ol style="list-style-type: none"> Asparagus Boston Fluffy Ruffles Other <p>6 – Fuchsia (1 plant)</p> | <p>7 – Geranium (1 plant)</p> <ol style="list-style-type: none"> Single Double Other <p>8 – Oxalis (Shamrock)</p> <p>9 – Succulent</p> <p>10 – Impatiens</p> <ol style="list-style-type: none"> Single Double Sun Patians New Guinea Impatiens Other <p>11 – Ivy</p> <ol style="list-style-type: none"> Swedish English Other <p>12 – Philodendron</p> <p>13 – Pothos (Devil's Ivy)</p> <p>14 – Bonsai</p> <p>15 – Hanging Plants (indoor)</p> <ol style="list-style-type: none"> Hanging flowering Hanging foliage <p>16 – Foliage plant</p> | <ol style="list-style-type: none"> Varigated Varicolored <p>17 - Foliage plant, green</p> <p>18 - Topiary</p> <p>19 – Hanging bag</p> <p>20 – Hanging basket (outdoor), single flower variety</p> <p>21 – Hanging basket, mixed flowers (outdoor)</p> <p>22 – Herb container garden</p> <p>23 – Terrariums (18" and under)</p> <p>24 – Dish Garden (18" and under)</p> <p>25 – Indoor Planter Combination of plants</p> <p>26 – Living rooted exhibit - not a terrarium or dish garden</p> <p>27 – Outdoor Planters (container) - combination of plants</p> <p>28 – Calla Lily</p> <p>29 – Fairy Garden</p> <p>30 – Any Other Plants not specified</p> |
|------------------------------------------------------------------------------------------------------------------------------------------------------------------------------------------------------------------------------------------------------------------------------------------------------------------------------------------------------------------------------------------------------------------------------------------------------------------------------------------------------------------------------------------------------------------------------------------------------------------------------------------------------------------------------------------------------------------------------------------------------------------------------|--------------------------------------------------------------------------------------------------------------------------------------------------------------------------------------------------------------------------------------------------------------------------------------------------------------------------------------------------------------------------------------------------------------------------------------------------------------------------------------------------------------------------------------------------------------------------------------------------------------------------------------------------------------------------------------------|--------------------------------------------------------------------------------------------------------------------------------------------------------------------------------------------------------------------------------------------------------------------------------------------------------------------------------------------------------------------------------------------------------------------------------------------------------------------------------------------------------------------------------------------------------------------------------------------------------------------------------------------------------------------------------|

CLASS 3 – ARTISTIC ARRANGEMENTS ADULT – DIVISION K

Accessories your choice unless otherwise specified

1st – \$2.00; 2nd – \$1.50; 3rd – \$1.00

- | | |
|---------------------------------------------------------------------------------------------------------------------------------------------------------------------------------------------------|------------------------------------------------------------------------------------------------------------------------------------------------------------------------------|
| <p>Lot 1 – Miniature (not over 3" in height or width)</p> <p>2 – Small (not over 5" in height or width)</p> <p>3 – Buffet</p> <p>4 – Special Occasions (specify on entry)</p> <p>5 – Corsages</p> | <p>6 – Basket of flowers</p> <p>7 – Centerpiece for dining table</p> <p>8 – Centerpiece with accessories</p> <p>9 – Dried arrangement</p> <p>10 – "America's 250th Year"</p> |
|---------------------------------------------------------------------------------------------------------------------------------------------------------------------------------------------------|------------------------------------------------------------------------------------------------------------------------------------------------------------------------------|

Falls Cinema

Hwy 59 NE • Thief River Falls
218-280-0604
www.fallscinema.com



LEE 1430 Main Ave N.
218-681-1903

Plumbing & Heating
Thief River Falls, MN

FALLS TOWING
218-684-5100

THIEF RIVER FALLS, MN

FALLSTOWING.COM

Come home to Celebrating our 52nd year!

Honker Flats
Greenhouse

Middle River 218-222-3484 • email: honkerflats@honkerflats.com • www.honkerflats.com

Hours in July: MONDAY-SATURDAY 9-6p
Put in GPS: 45313 240th NE, Middle River, MN 56737

For All Your Income Tax & Accounting Needs

GALE E. SCHMITZ
Certified Public Accountant

103 3rd St. East • 681-6008 • Thief River Falls

Enjoy The Fair!

★ DIGITAL TELEPHONE
★ CINEMAX
★ DIGITAL CABLE
★ HIGH SPEED INTERNET
ACCESS VIA CABLE MODEM

Sjoberg's Inc.

315 Main Ave. N. • Thief River Falls • 218-681-3044

Welcome to the Fair!

Ericco MFG

Proudly Supporting the Area Communities Since 1976

CUSTOM TOOL AND MANUFACTURING COMPANY
523-5600 • Thief River Falls

American Legion
Post 117

324 Brooks Ave.
Thief River Falls, MN 56701
218-681-1341

CLASS 4- ARTISTIC ARRANGEMENT ~ YOUTH - DIVISION L

1st - \$2.00; 2nd - \$1.50; 3rd - \$1.00

Accessories permitted

Lot 1 - Floral Arrangement

2 - Dried Arrangement

3 - Arrangement In Or With A Toy

CLASS 5 - ONE VEGETABLE / ONE COMMUNITY

1st - \$2.00, 2nd - \$1.50, 3rd - \$1.00

Lot 1 - Potted plant

- Potted Leafy Greens plant
- Mixed planter- container of at least one Leafy Greens - a combination of any of the following: flowers, foliage plant and/or vegetables.

Lot 2 - Leafy Greens

- Lettuce - leafy - 6 leaves
- Head - 1 head
- Spinach - 6 leaves
- Swiss Chard - 3 Stalks
- Other leafy greens - 1 head or 3 to 6 leaves

Lot 3 - Craft project with a leafy greens theme

Lot 4 - Vegetable sculpture using leafy greens and anything else. May purchase leafy greens for this.

Lot 5 - Floral design using at least one leafy green and any other plant material. May purchase leafy greens and/or other vegetables for this. Floral material must be grown or collected in nature by the exhibitor.

HOME AND FAMILY DEPARTMENT

Overall Superintendent - Arlette Defreese, 681-3859; Asst. Superintendent - Sherry Sorenson, 686-9757, Arlene Thune, 681-1740

RULES

- All articles must be exhibited by maker - must never have received a premium and completed within 2 years preceding the fair.
- No person can enter more than one article under same lot number in any case except as collection or display. Entries cannot be made in the same lot by more than one member of a family.
- The judge is instructed not to award premiums unless the articles are deemed for real merit, not to be borrowed or purchased.
- Entries in this department are limited to residents of northwestern Minnesota.
- Every precaution will be taken to protect the exhibits. The management will not be responsible for any loss or damage that may occur.
- Entry Day - Wednesday, July 15.** Exhibits will be taken from 10 A.M. to 5 P.M. No entries will be admitted after 6 P.M.
- Judging Day - Thursday, July 16.** Exhibits will be judged starting at 10 A.M.
- Closing Day - Sunday, July 19.** Exhibits must be picked up after 5 P.M. Exhibits left after this time will be taken to the Fair Board office and disposed of the following day. The Fair Board will not be responsible for exhibits left after this time.

DIVISION M - ADULT CULINARY

Adult Includes Anyone 14 Years And Older

Sherry Sorenson, Superintendent, 686-9757

DIVISION N - CHILDREN'S CULINARY

Children Includes Anyone 13 Years And Younger

Sherry Sorenson, Superintendent, 681-2243 or 686-9757

Use Same Lot #'s For Both Divisions M And N

Special Youth Award - Jean Wold Memorial Bread Baking and Preservation

"BUTTER CAKES" must definitely be made with butter. Breads, pies, and cakes can be exhibited in smaller sizes than the customary size. All products must be made from a home recipe unless specified, as a MIX under lot number. **Products from frozen dough will be accepted in frozen lot only.**

Prizes: 1st - \$2.00; 2nd - \$1.50; 3rd - \$1.00

CLASS 1 - BREADS

If regular size loaves are displayed, one-half may be taken home after judging. If not picked up, it will be disposed of. To avoid unnecessary waste, mini-loaves may be displayed.

Lot 1 - White Bread

- | | | | |
|-------------------------|-------------------------------|-------------------------------|--------------------------|
| 2 - Whole Wheat Bread | b. Bran | Biscuits | c. Lemon |
| 3 - Graham Bread | c. Cornmeal | g. Lemon | d. Twists |
| 4 - Rye Bread | d. Jelly | h. Other | e. Caramel |
| 5 - Oatmeal Bread | e. Oatmeal | 17 - Muffins (from a mix) | f. Other |
| 6 - Cornmeal Bread | f. Spice | a. Plain | 22 - Bread Machine Bread |
| 7 - Cracked Wheat | g. Cheese | b. Bran | (made with your own |
| 8 - Rolls, Fruit (3) | h. English | c. Cornmeal | recipe) |
| 9 - Rolls | i. Blueberry | d. Chocolate Chip | a. White |
| a. Cloverleaf, white | j. Dry Cereal | e. Blueberry | b. Whole Wheat |
| b. Butterhorn, white | k. Rhubarb | f. Banana | c. Graham |
| c. Dinner, white | l. Zucchini | g. Other | d. Rye |
| d. Parkerhouse, white | m. Whole Wheat | 18 - Loaf Bread | e. Oatmeal |
| e. Dark Cloverleaf | n. Rice | (from frozen bread dough) | f. Other |
| f. Dark Butterhorn | o. Fruit flavored | a. White | 23 - Bread Machine Bread |
| g. Dark Dinner | p. Other | b. Dark | (from a mix) |
| h. Dark Parkerhouse | 14 - Baking Powder Biscuits | 19 - Buns (3) (from frozen | a. White |
| i. Graham | (3) | bread dough) | b. Whole Wheat |
| j. Crescent/Butterhorns | 15 - Nut or Fruit Bread (Not | a. White | c. Graham |
| k. Other | Made With Yeast) | b. Dark | d. Rye |
| 10 - Other | a. Banana | 20 - Rolls (3) (from frozen | e. Other |
| 11 - Rolls: Frosted (3) | b. Date | bread dough) | 24 - Doughnuts (3) |
| a. Cinnamon | c. Pumpkin | a. Cloverleaf (White) | a. Raised, Made from |
| b. Orange | d. Poppyseed | b. Cloverleaf (Dark) | Yeast |
| c. Lemon | e. Cranberry | c. Butterhorn (White) | b. Plain, Made without |
| d. Twists | f. Prune | d. Butterhorn (Dark) | Yeast |
| e. Caramel | g. Apricot | e. Dinner (White) | c. Blueberry |
| f. Tea Ring | h. Rhubarb | f. Dinner (Dark) | d. Applesauce |
| g. Other | i. Zucchini | g. Parkerhouse (White) | e. Other |
| 12 - Buns (3) | j. Other | h. Parkerhouse (Dark) | 25 - Gluten Free Bread |
| a. White | 16 - Quick Bread (from a mix) | i. White | 26 - Organic Bread |
| b. Whole Wheat | a. Nut or Fruit Bread | j. Dark | 27 - Flax Bread |
| c. Rye | b. Date | k. Other | 28 - Dill Bread |
| d. Graham | c. Poppyseed | 21 - Rolls, Frosted (3) (from | 29 - Sourdough |
| e. Other | d. Cranberry | frozen bread dough) | 30 - Other |
| 13 - Muffins (3) | e. Cornmeal | a. Cinnamon | |
| a. Plain | f. Baking Powder | b. Orange | |

CLASS 2 – CAKES

When entering a cake, make a whole recipe, unfrosted, but only one-third cut is enough for entry. Three cupcakes are enough for display. No frosting on cupcakes.

- | | | |
|-----------------------------------|------------------------------------------|---------------------|
| Lot 1 – Angel Food, no icing | 9 – Carrot | d. Lemon |
| 2 – Sponge, no icing | 10 – Honey | e. Marble |
| 3 – Chocolate, loaf or 3 cupcakes | 11 – Yellow | f. Yellow |
| 4 – Spice, loaf or 3 cupcakes | 12 – Zucchini | g. Angel Food |
| 5 – White loaf or 3 cupcakes | 13 – Cakes from mix (loaf or 3 cupcakes) | h. Other |
| 6 – Butter | a. White | 14 – Gluten Free |
| 7 – Jelly Roll | b. Chocolate | 15 – Decorated Cake |
| 8 – Fruit Cake | c. Spice | 16 – Coffee Cake |

17 – Other	1st	2nd	3rd
18 – Decorated (Styrofoam may be used as base for decorated cake).....	3.00	2.50	2.00

CLASS 3 – COOKIES

Three of Each

- | | | | |
|------------------------|--------------------|---------------------------|-------------------|
| Lot 1 – White | b. Other | 10 – Oatmeal | 16 – No Bake |
| a. Rolled Sugar | 4 – Filled | a. Oatmeal | 17 – From a Mix |
| b. Drop | 5 – Fancy Butter | b. Oatmeal Raisin | a. Sugar |
| c. Formed | 6 – Overnight | c. Oatmeal Chocolate Chip | b. Chocolate Chip |
| 2 – Ginger | a. White | 11 – Honey | c. Peanut Butter |
| a. Rolled | b. Chocolate | 12 – Peanut Butter | d. M & M |
| b. Drop | c. Brown Sugar | 13 – Pumpkin | e. Other |
| c. Formed | 7 – Chocolate Chip | 14 – Decorated Cookie | 18 – Gluten Free |
| 3 – Fruit and Nut Drop | 8 – Coconut | 15 – M & M | 19 – Other |
| a. Chocolate Drop | 9 – Molasses | | |

CLASS 4 – BARS

Three of Each

- | | | | |
|------------------------|-------------------|------------------------|-----------------------|
| Lot 1 – Baked | i. Graham Cracker | 2 – No Bake | f. Peanut Butter |
| a. Brownies, unfrosted | j. Chocolate Chip | a. Rice Krispies | g. Chocolate Chip |
| b. Brownies, frosted | k. Lemon | b. Other | h. Lemon |
| c. Date and Nut | l. Carrot | 3 – From A Mix | i. Other |
| d. Cereal | m. Honey | a. Brownies, Unfrosted | 4 – Gluten Free |
| e. Raisin | n. Pumpkin | b. Brownies – frosted | a. Frosted Brownies |
| f. Coconut | o. Zucchini | c. Date and Nut | b. Unfrosted Brownies |
| g. Fig | p. Banana | d. Cereal or 7-Layer | c. Lemon |
| h. Peanut Butter | q. Other | e. Coconut | d. Other |

CLASS 5 – CONFECTIONS

Three of Each

- | | | | |
|--------------------------------|-----------------------|-------------------|------------|
| Lot 1 – Taffy | 4 – Peanut Butter Cup | 8 – Caramels | 12 – Other |
| 2 – Peanut Brittle | 5 – Divinity | 9 – Mints | |
| 3 – Chocolate Covered Cherries | 6 – Fudge | 10 – Butterscotch | |
| | 7 – Pinoche | 11 – Nut Goodie | |

CLASS 6 – PIES

Display only individual pies. 4 or 4-1/2 Inch Pan

Custard or cream based pies will not be accepted. Cannot use commercial pie filling.

- | | | | |
|---------------------|---------------|----------------|-----------------|
| Lot 1 – Green Apple | 4 – Cherry | 7 – Strawberry | 8 – Gluten Free |
| 2 – Peach | 5 – Blueberry | a. One Crust | 9 – Other |
| 3 – Rhubarb | 6 – Raspberry | b. Two Crust | |

CLASS 7 – SPECIALTIES

Three of Each

- | | | | |
|----------------------|----------------|-------------------------|--------------------------------|
| Lot 1 – Sand Bakkels | 6 – Fattigmand | 9 – Swedish Tea Ring | 14 – Swedish Limpa Bread |
| 2 – Krumkake | 7 – Flat Bread | 10 – Polish Coffee Cake | 15 – Goat Cheese |
| 3 – Rosettes | a. Dark | 11 – German Bread | 16 – Scandinavian Almond Bread |
| 4 – Spritz | b. Light | 12 – Jewish Coffee Cake | 17 – Other |
| 5 – Berline Kranzer | 8 – Lefse | 13 – Ukranian Kolachy | |

CANNING RULES

All canned fair entries must:

- Use clear, standard canning jars (i.e. Kerr, Ball, Mason, etc.) with 2-piece lid. Prefer pints
- Be labeled with name of product, date canned, method used (boiling water bath or pressure canner) and time of processing. Tape label on jar, not on lid.
- Use recommended time and processing method according to most current publication from USDA or University of Minnesota Extension.

(www.extension.umn.edu/foodsafety/preserving-and-preparing). Our altitude is 1,132 to use when calculating processing times.

Jams, jellies, pickles, relishes and salsa will be opened to judge for texture and flavor. Canned fruits, vegetables and meats will not be opened.

Call Pennington County Extension Office 218-683-7030 or Dept. Superintendent with any questions.

CLASS 8 – CANNED FRUIT

- | | | | |
|--------------------|-----------------|-----------------------|---------------------|
| Lot 1 – Apples | b. Wild | b. Wild | 14 – Fruit Cocktail |
| a. Whole or sliced | 5 – Grapes | 10 – Raspberries | 15 – Crab Apples |
| b. Applesauce | a. Tame | a. Tame | 16 – Gooseberry |
| 2 – Apricots | b. Wild | b. Wild | 17 – Cherries |
| 3 – Blueberries | 6 – Juneberries | 11 – Strawberries | a. Red |
| a. Tame | 7 – Peaches | a. Tame | b. Ground |
| b. Wild | 8 – Pears | b. Wild | c. Other |
| 4 – Currants | 9 – Plums | 12 – Wild Cranberries | 18 – Other |
| a. Tame | a. Tame | 13 – Rhubarb | |

19 – Collection (4 varieties).....	1st	2nd	3rd
	3.00	2.50	2.00

CLASS 9 – PRESERVES

- | | | | |
|---------------------------------------|-------------------|-------------|----------------|
| 4 oz. or 8 oz. jelly jar may be used. | 3 – Gooseberry | a. Tame | 11 – Raspberry |
| Lot 1 – Blueberries | 4 – Ground Cherry | b. Wild | a. Tame |
| a. Tame | 5 – Plum | 7 – Tomato | b. Wild |
| b. Wild | a. Tame | 8 – Rhubarb | 12 – Other |
| 2 – Currant | b. Wild | 9 – Pears | |
| | 6 – Strawberry | 10 – Peach | |

13 – Collection (4 varieties).....	1st	2nd	3rd
	3.00	2.50	2.00

Grand Pass

Good For Admission To All Grandstand Events

One Price Ticket: Adults \$50

Children 12 & Under \$20

GRAND PASS GOOD FOR ADMISSION TO ALL 4 GRANDSTAND EVENTS

No Reserve Seating (\$80 Value)

AVAILABLE UNTIL NOON ON THURSDAY, JULY 16 IN

THIEF RIVER FALLS: Hugos, Northdale Main,

Northdale Square, Northdale Petro Pumper,

Station 59 & Erl's Market;

ST. HILAIRE: Kruse In;

GOODRIDGE: Cenex

Tickets Can Also Be Purchased Separately

For Each Event At The Grandstand.

	Adult	Children (12 & Under)
Slamabama (Thurs)	\$10	\$5
Bullride (Fri.)	\$25	\$10
Bullride (Sat.)	\$25	\$10
Demo (Sun.)	\$20	\$10
Total	\$80	\$35

LIMITED NUMBER OF GRAND PASSES AVAILABLE



NO DOGS ALLOWED
on fairgrounds premises during the fair by fairgoers, except service dogs and dog shows. This will be enforced.

NO WATER BALLOONS or other WATER TOYS in the barns to prevent upsetting the animals.

QUALITY INN

The Area's Only Full-Service Facility

- ★ Indoor Pool and Spa
- ★ HBO and Cable TV
- ★ High Speed Internet
- ★ Banquet and Meeting Facilities for Up To 350 People

★ Full Bar



LOCAL **681-7555**

1060 State Hwy. 32 S., Thief River Falls

29TH ANNUAL

THIEF RIVER FALLS

JULY 17-18,
2026



For Lodging Options Go To:
www.visittrf.com

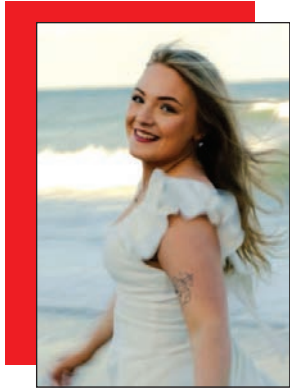
PENNINGTON
COUNTY
FAIRGROUNDS
7:00 PM

THUNDER ON HOOVES



THIEF RIVER FALLS, MN

BANDSHELL EVENTS



GRACIE CROCKER



CAT SANK TRIO



THE WOODPICKS



THE BAD CAMPERS



CATHY & MARY JO



PETER SAMUELSON



**ACOUSTIC HICKS
& A CHICK**



TAMI LEE & THE NORTHERN LIGHTS

**Advance
GrandPass Tickets
For All Shows
\$50 Adults
\$20 Kids 12 & under**

Beginning Mon., July 1 and Ending Thursday July 16 at noon

**SUNDAY, JULY 19TH
IN THE BANDSHELL 3-4 PM**

**PENNINGTON COUNTY
OUTSTANDING FARM LEADERS &
4-H RECOGNITION PROGRAM**

*Performing Arts performances and Fashion Revue
Grand Champion, Herdsmanship, Emerging Leadership,
Farm Family of the Year and 4-H Hall of Fame Recognition.*



BANDSHELL SCHEDULE

WEDNESDAY - JULY 15

5 pm Gracie Crocker
6:30 pm Jindo Music Bingo
8 pm-Close Kenny & The Classics

THURSDAY - JULY 16

1, 3, & 5 pm Tami Lee & The Northern Lights
2 & 4 pm Billy Kezar
6-7 pm Jindo
7 - Close The Snowmen

FRIDAY - JULY 17

1,3 & 5pm Bad Campers
2 & 4 pm Cat Sank Trio
6-8 pm Jindo Music Bingo
8 pm-Close James Carothers

SATURDAY - JULY 18

1 & 3pm Acoustic Hicks & a Chick
2 & 4pm Peter Samuelson
5 - 7pm The Woodpicks
7 - 8pm Big Mike Holmgren
8 pm -Close James Carothers

SUNDAY - JULY 19

1 - 3pm Cathy & Mary Jo
3 - 4pm 4-H Recognition Program
4 - 9pm Acoustic in the Round
9 pm Raffle Drawing

FIREWORKS EXTRAVAGANZA

Wed., July 15
Dusk
**View From The
Fairgrounds**

~ Sponsored By ~
**AMUSEMENT ATTRACTIONS &
PENNINGTON COUNTY FAIRBOARD**

**EVERYONE
LOVES THE
COUNTY FAIR**



POMP'S TIRE SERVICE
124 Main Ave S. • Thief River Falls • 218-681-2656

DUNKING STAND

**AVAILABLE FOR YOUR
ORGANIZATIONS**

Contact Brittney Olson 689-2524

2-HOUR TIME SLOTS AVAILABLE
2-4 PM / 4-6 PM / 6-8 PM / 8-10 PM
50/50 SPLIT
SOUTH SIDE OF HUCK OLSON ARENA



- Clothing
- Home Decor
- Household
- Furniture

**Community
Consignments**
Monday - Saturday
9:00am - 6:00pm

203 Main Ave, Thief River Falls • (218)681-7088
trfcs@gmail.com

CLASS 10 – MARMALADE

Lot 1 – Apricot	3 – Grape	5 – Orange	7 – Other
2 – Carrot	4 – Peach	6 – Rhubarb	
8 – Collection (4 varieties)		1st	2nd
		3.00	2.50
			3rd
			2.00

CLASS 11 – JELLIES

Lot 1 – Apple	6 – Blueberry	a. Tame	12 – Crab Apple
2 – Chokecherry	a. Tame	b. Wild	13 – Cherry
3 – Cranberry	b. Wild	9 – Pincherry	14 – Gooseberry
4 – Grape	7 – Raspberry	10 – Plum	15 – Strawberry-Rhubarb
a. Tame	a. Tame	a. Tame	16 – Jalapeno
b. Wild	b. Wild	b. Wild	17 – Appricot
5 – Currant	8 – Strawberry	11 – Rhubarb	18 – Other
		1st	2nd
		3.00	2.50
			3rd
			2.00

CLASS 12 – JAMS

Lot 1 – Raspberry	4 – Plum-	9 – Peach	14 – Refrigerator Jam
a. Tame	a. Tame	10 – Ground Cherry	15 – Strawberry-Rhubarb
b. Wild	b. Wild	11 – Gooseberry	16 – Triple Berry
2 – Strawberry	5 – Apricot	12 – Blueberry	17 – Other
a. Tame	6 – Juneberry	a. Tame	
b. Wild	7 – Rhubarb	b. Wild	
3 – Apple Butter	8 – Grape	13 – Cherry	
18 – Collection (4 varieties)			
		1st	2nd
		3.00	2.50
			3rd
			2.00

CLASS 13 – PICKLES

Lot 1 – Bean	b. Sliced	7 – Mixed Mustard	13 – Tumeric
2 – Beet	c. Sweet	8 – Onion	14 – Refrigerator
3 – Carrot	d. Dill	9 – Peach	15 – Peppers
4 – Crab Apples	e. Bread and Butter	10 – Pear	16 – Cauliflower
5 – Cucumbers	f. Sandwich	11 – Watermelon	17 – Asparagus
a. Ripe	6 – Green Tomato	12 – Party Mix	18 – Other
		1st	2nd
		3.00	2.50
			3rd
			2.00

CLASS 14 – RELISH

Lot 1 – Apple	4 – Corn	7 – Green Tomato	10 – Zucchini	13 – Other
2 – Beet	5 – Cranberry	8 – Picalilli	11 – Pepper	
3 – Chow Chow	6 – Cucumber	9 – Ripe Tomato	12 – Carrot	
14 – Collection (4 varieties)				
		1st	2nd	3rd
		3.00	2.50	2.00

CLASS 15 – CANNED VEGETABLES

Lot 1 – Asparagus	a. Cut	b. Cut	10 – Peas
2 – Green Beans	b. Whole	c. Baby corn	11 – Pumpkin
a. Cut	5 – Carrots	7 – Green Peppers	12 – Sauerkraut
b. Whole	a. Diced	8 – Greens	13 – Squash
3 – Yellow Beans	b. Sliced	a. Beet	14 – Tomatoes
a. Cut	c. Whole	b. Spinach	a. Green
b. Whole	6 – Corn	c. Swiss Chard	b. Yellow
4 – Beets	a. Creamed	9 – Mixed Vegetables	c. Ripe
15 – Other			
16 – Collection (4 varieties)		1st	2nd
		3.00	2.50
			3rd
			2.00

CLASS 16 – CANNED MEATS

Lot 1 – Beef	4 – Pork	7 – Wild Game	c. Moose
2 – Chicken	5 – Mince Meat	a. Duck	d. Venison
3 – Fish	6 – Turkey	b. Goose	e. Other
8 – Other			
9 – Collection (4 varieties)		1st	2nd
		3.00	2.50
			3rd
			2.00

CLASS 17 – QUICK MEALS

Lot 1 – Soups	e. Pea	2 – Stews	e. Venison
a. Bean	f. Turkey	a. Beef	f. Other
b. Beef	g. Vegetable	b. Chicken	3 – Meat Balls
c. Chicken	h. Venison	c. Turkey	4 – Other
d. Chili	i. Other	d. Moose	

CLASS 18 – MISCELLANEOUS

Lot 1 – Tomato Sauces	e. Barbecue Sauce	g. Other Tomato Sauce	a. Dark
a. Spaghetti Sauce	f. Salsa	2 – Honey (Pint)	b. White
b. Tomato Sauce	1. Mild	3 – Horseradish	6 – Other
c. Chili Sauce	2. Hot	4 – Chutney	
d. Hot Sauce	3. Other	5 – Eggs	

CLASS 19 – JUICES (FOR DRINKING)

Lot 1 – Apple	4 – Cranberry	7 – Strawberry	10 – Other
2 – Chokecherry	5 – Raspberry	8 – Tomato	
3 – Crab Apple	6 – Rhubarb	9 – Grape	

CLASS 20 – SYRUPS

Lot 1 – Blueberry	4 – Cherry	7 – Box Elder	10 – Other
2 – Chokecherry	5 – Raspberry	8 – Apple - Cinnamon	
3 – Cranberry	6 – Strawberry	9 – Maple	

CLASS 21 – DEHYDRATED FOODS

PREFER ZIPLOCK SANDWICH BAG

Limit of 1 per lot.

Lot 1 – Fruits	d. Celery	b. Dandelion	g. Sage
2 – Vegetables	e. Onion	c. Garlic scapes	h. Parsley
a. Squash	3 – Meats	d. Dill	5 – Other
b. Tomatoes	4 – Herbs	e. Rosemary	
c. Peppers	a. Chamomile	f. Oregano	

CLASS 22 – MICROWAVED FOODS

Limit of 1 per lot.

- | | | | |
|---------------------------------|-----------------------|-------------------------|--------------------------|
| Lot 1 – Quick Bread
2 – Cake | a. Loaf
b. Cupcake | 3 – Cookies
4 – Bars | 5 – Candies
6 – Other |
|---------------------------------|-----------------------|-------------------------|--------------------------|

CLASS 23 – FOR DIABETICS

Limit of 1 per lot.

- | | | | | |
|------------------------------------|--------------------------|------------------------------|----------------------|-----------|
| Lot 1 – Breads
2 – Quick Breads | 3 – Cakes
4 – Cookies | 5 – Bars
6 – Canned Fruit | 7 – Jelly
8 – Jam | 9 – Other |
|------------------------------------|--------------------------|------------------------------|----------------------|-----------|

DIVISION MBW

Prizes: 1st – \$2.00; 2nd – \$1.50; 3rd – \$1.00

Contestants under the age of 21 may only enter homemade root beer.

CLASS 1 – HOMEMADE BEER & ROOT BEER

Questions contact Julie or Wayne Bezene at 218-517-0491 or Eric Wold at 218-556-3687 or ewold74@gmail.com. All contestants must be 21 years of age or older (except root beer entrants). A photo ID will be shown as proof of age. Only 1 entry per lot is allowed. 12 to 64 ounce bottle volume per entry. All beer must be home-brewed by an amateur and in non-commercial facilities. Any entry brewed with the help of another brewer must be entered under the names of all brewers who helped. Bottle must be labeled with beer name, date bottled. Beer may be made from malt, hops, honey or any other product commonly used in making beer. Entries will be judged on: Appearance, Aroma, Clarity, Mouthfeel, Flavor and Drinkability or Overall Impression. **Entries will be taken July 15, 2026.**

- | | | | |
|-------------------------------------------------------------------------------------------------------------------------------------------------------------------------------------------------------------------------------------|---------------------------------------------------------------------------------------------------------------------------------------------------------------------------------------|-----------------------------------------------------------------------------------------------------------------------------------------------------------------------------------------------------|----------------------------------------------------------------------------------------------------------------------------------------------------------------|
| Lot 1 – Pilsner Lager
a. American
b. German
c. Bohemian
2 – Amber Lager
a. European Marzen
“Oktoberfest”
b. American October-fest
3 – Bock Lager
a. Traditional
b. Doppelbock
4 – Light Hybrid Ale | a. Kolsch
b. Wheat
c. Rye
d. Blonde
5 – Amber Hybrid Ale
a. American
b. German Altbier
6 – American Ale
a. Pale
b. Amber
c. Brown
7 – India Pale Ale | a. American
b. Imperial
c. English
8 – Imperial
a. Scotch
b. Irish Red
c. Irish Blonde
d. British Bitter
9 – Stout & Porters
a. Oatmeal
b. Dry
c. Sweet
d. Milk | 10 – Specialty Beer/Other
a. Smoked
b. Steam
c. Barley Wine
d. Gluten Free
e. Other
11 – Mead
a. Sweet
b. Dry
12 – Hard Apple Cider |
|-------------------------------------------------------------------------------------------------------------------------------------------------------------------------------------------------------------------------------------|---------------------------------------------------------------------------------------------------------------------------------------------------------------------------------------|-----------------------------------------------------------------------------------------------------------------------------------------------------------------------------------------------------|----------------------------------------------------------------------------------------------------------------------------------------------------------------|

CLASS 2 – HOMEMADE WINE

Wine - All contestants must be 21 years of age or older. A photo ID will be required as proof of age. Only 1 entry per lot is allowed. Wine must be bottled in 26 oz. bottles, minimum size (clear bottles preferred). All bottles must be securely corked or capped. Each bottle must be labeled with description of contents. Bottle must be labeled with wine name and date bottled. Bottles must be clean and carry no other labels or other identification. Entries will be judged on: Aroma, Appearance, Flavor, Body, Drinkability and Overall Impression. **Entries will be taken on July 15, 2026.**

- | | | |
|------------------------------------------------------------------------------------------------------------------------------------------|---------------------------------------------------------------------------------------------------------------------------------------------------------------------------------------------|-------------------------------------------------------------------------------------------------------------------|
| Lot 1 – Fruit - Dry - including flower wine
2 – Fruit - Sweet - including flower wine
3 – Grape - Dry red
4 – Grape - Sweet red | 5 – Grape - Dry white
6 – Grape - Sweet white
7 – Vegetable - Dry including root wine
8 – Vegetable - Sweet including root wine
9 – Wild Fruit - Dry
10 – Wild Fruit - Sweet | 11 – Other Grain / Rhubarb, etc. - Dry
12 – Other Grain / Rhubarb, etc. - Sweet
13 – Port
14 – Any Other |
|------------------------------------------------------------------------------------------------------------------------------------------|---------------------------------------------------------------------------------------------------------------------------------------------------------------------------------------------|-------------------------------------------------------------------------------------------------------------------|

DIVISION O – NEEDLEWORK

Arlene Thune, Superintendent, 681-1740

Prizes: 1st – \$2.50; 2nd – \$2.00; 3rd – \$1.50

Enter between 10 a.m. and 5 p.m. Wednesday, July 15. All entries must be mounted, framed, finished and clean. All pictures must be ready to hang. All entries must be the work of the exhibitor and completed within 2 years preceding the Fair. Pick up entries Sunday after 5 p.m. Pillows must be assembled and filled.

CLASS 1 – EMBROIDERY

- | | | | | |
|--------------------------------------------------------------------------------------|------------------------------------------------------------------------|------------------------------------------------------------------------|------------------------------------------------------------|---------------------------|
| Lot 1 – Pillow Cases (2)
2 – Bedspread
3 – Scarf or Runner
4 – Dinner Cloth | 5 – Luncheon Cloth
6 – Doily
7 – Towels (2)
8 – Placemats (2) | 9 – Picture (Framed)
10 – Wall Hanging
11 – Embroidered Clothing | 12 – Purses
13 – Smocking
14 – Crewel
15 – Aprons | 16 – Pillow
17 – Other |
|--------------------------------------------------------------------------------------|------------------------------------------------------------------------|------------------------------------------------------------------------|------------------------------------------------------------|---------------------------|

CLASS 2 – HARDANGER

- | | | | |
|--------------------------------------------|-----------------------------------|-----------------------------|-------------------------|
| Lot 1 – Centerpiece
2 – Scarf or Runner | 3 – Bell Pull
4 – Framed Piece | 5 – Tablecloth
6 – Doily | 7 – Pillow
8 – Other |
|--------------------------------------------|-----------------------------------|-----------------------------|-------------------------|

CLASS 3 – COUNTED CROSS-STITCH

- | | | | |
|-----------------------------------------------------------------------------------------------------------------------------------------------|-----------------------------------------------------------------------------------------------------------|------------------------------------------------------------------------------------------------------|---------------------------------------------------------------|
| Lot 1 – Centerpiece
2 – Scarf or Runner
3 – Tablecloth
4 – Wall Hanging, Framed
5 – Picture, Framed
a. Mini – Under 25 Sq. In. | b. Over 25 Sq. In.
c. Samplers
d. Words and Sayings
e. Original
f. Still Life
g. Landscape | h. Animals
i. Birds
j. Flowers
6 – Bell Pull/Wall Hanging
7 – Purse
8 – Placemats (2) | 9 – Set of Pictures
10 – Bibs
11 – Pillow
12 – Other |
|-----------------------------------------------------------------------------------------------------------------------------------------------|-----------------------------------------------------------------------------------------------------------|------------------------------------------------------------------------------------------------------|---------------------------------------------------------------|

CLASS 4 – CROSS-STITCH (Stamped or on Gingham)

- | | | | | |
|------------------------------------------------------------------|-----------------------------------------------------|---------------------------------------------------------|-----------------------------------------------------|---------------------------|
| Lot 1 – Pillow Cases (2)
2 – Bedspread
3 – Scarf or Runner | 4 – Dinner Cloth
5 – Luncheon Cloth
6 – Doily | 7 – Dish Towels (2)
8 – Placemats (2)
9 – Picture | 10 – Wall Hanging
11 – Purse
12 – Crib Quilts | 13 – Pillow
14 – Other |
|------------------------------------------------------------------|-----------------------------------------------------|---------------------------------------------------------|-----------------------------------------------------|---------------------------|

CLASS 5 – HAND APPLIQUE

- | | | | |
|-----------------------------------|-------------------------------|--------------------------------|-----------|
| Lot 1 – Sweatshirts
2 – Shirts | 3 – Tablecloths
4 – Runner | 5 – Wall Hanging
6 – Pillow | 7 – Other |
|-----------------------------------|-------------------------------|--------------------------------|-----------|

CLASS 6 – MACHINE WORK

- | | | | |
|----------------------------------------------------------------------------|------------------------------------------------------------------|------------------------------------------------|----------|
| Lot 1 – Machine Embroidery
2 – Machine Applique
3 – Machine Knitting | a. Sweater, Plain
b. Sweater, Fancy
c. Sweater, Sleeveless | d. Child’s Set
e. Cap, Mitten and Scarf Set | f. Other |
|----------------------------------------------------------------------------|------------------------------------------------------------------|------------------------------------------------|----------|

PENNINGTON COUNTY FAIR
Stars & Stripes & County Fair Nights
America's 250th Year

T-shirt Sponsors

Nelson Ink, The Shed, Legacy Event Center, Thief River Golf Club and Benton, Safranski & Co. LLP

For Fast Oil Changes And For All Your Repair Needs See:

PENNINGTON FAST LUBE & REPAIR

201 Main Ave. South, TRF 218-681-8972

Enjoy the Pennington County Fair!

PAINT & GLASS INTERIORS, INC.
YOUR HOME IMPROVEMENT STORE

PGI 324 Horace Ave. N. • Thief River Falls • (218) 681-3012



CPA Benton, Safranski & Co. LLP
Certified Public Accountants

Welcome to the Pennington County Fair!

218-681-4287
116 West Third Street
Thief River Falls, MN 56701



LEGENDS SPORTING GOODS
EQUIPMENT CUSTOM APPAREL

Monday - Friday
9 am - 6 pm

212 Atlantic Ave. • Thief River Falls • (218) 681-1006



FAIRTIME! SORVIG OIL
Mobil Distributor
(218) 681-7331
1501 Main Avenue North, Thief River Falls

CLASS 7 – KNITTING

- | | | | |
|-------------------------------|--------------------------------------------|-------------------------|-----------------|
| Lot 1 – Sweater, Adult, Bulky | 7 – Afghan | 13 – Socks | 20 – Potholder |
| 2 – Sweater, Adult, Fancy | 8 – Bedspread | 14 – Knit Lace | 21 – Scarf |
| 3 – Sweater, Adult, Plain | 9 – Hat or Cap | 15 – Baby Afghan | 22 – Lap Robe |
| 4 – Sweater, Child | 10 – Mittens | 16 – Child’s Outfit | 23 – Dish Cloth |
| 5 – Infant Wear, Set | 11 – Slippers, Adult or Child | 17 – Sleeveless Sweater | 24 – Felting |
| 6 – Shawl, Cape, Stole, etc. | 12 – Coordinate Set of Cap, Mittens, Scarf | 18 – Toys | 25 – Pillow |
| | | 19 – Doll Clothes | 26 – Other |

CLASS 8 – CROCHETING

- | | | | |
|------------------------------|---------------------|----------------------------------------------------|------------------------------|
| Lot 1 – Sweater, Adult | tens | a. Over 12” | 24 – Sun Catcher |
| 2 – Sweater, Child | 10 – Purse | b. Under 12” | 25 – Collars |
| 3 – Infant Wear, Set | 11 – Slippers | 18 – Outfit for Adult or Child (Coat, Dress, Suit) | 26 – Vest |
| 4 – Shawl, Cape, Poncho, etc | 12 – Edgings | 19 – Coordinated Set of Cap, Scarf, Mittens | 27 – Towels |
| 5 – Afghan | 13 – Dresser Set | 20 – Baby Afghan | 28 – Fillet Crochet |
| 6 – Afghan – Granny Sqs. Pc. | 14 – Dresser Scarf | 21 – Toys | 29 – Crocheted Dressed Dolls |
| 7 – Bedspread | 15 – Placemats (2) | 22 – Doll Clothes | 30 – Lap Robe |
| 8 – Tablecloth | 16 – Doily - Yarn | 23 – Potholder | 31 – Rug |
| 9 – Hat, Cap, Scarf or Mit- | 17 – Doily - Thread | | 32 – Dish Cloth |
| | | | 33 – Pillow |
| | | | 34 – Other |

CLASS 9 – TATTING

- | | |
|-------------------|---------------|
| Lot 1 – Edging | 3 – Ornaments |
| 2 – Framed Pieces | 4 – Other |

CLASS 10 – NEEDLEPOINT (With Yarn)

- | | |
|----------------------------|-------------------------|
| Lot 1 – Petit Point | 6 – Upholstered Article |
| 2 – Bell Pull/Wall Hanging | 7 – On Plastic |
| 3 – Picture | 8 – Pillow |
| 4 – Long Stitch | 9 – Other |
| 5 – Tote or Purse | |

CLASS 11 – LATCH HOOK (Braided or Hooked)

- | | |
|----------------------|------------|
| Lot 1 – Wall Hanging | 3 – Pillow |
| 2 – Rugs | 4 – Other |

CLASS 12 – WEAVING

- | | |
|-----------------------------|---------------------|
| Lot 1 – Placemats (2) | 5 – Swedish Weaving |
| 2 – Picture or Wall Hanging | 6 – Pillow |
| 3 – Rug | 7 – Other |
| 4 – Table Runner | |

CLASS 13 – QUILTING (Hand Quilted and Hand Worked)

- | | |
|------------------------------------|------------------|
| Lot 1 – Embroidered (Hand) | 5 – Wall Hanging |
| 2 – Applique (Hand) | 6 – Crib |
| 3 – Cross Stitch (Hand) | 7 – Clothing |
| 4 – Pieced Patchwork (hand pieced) | 8 – Quilts |
| | 9 – Other |

CLASS 14 – HOLIDAY DECORATIONS - NEEDLEWORK ONLY

- | | |
|-------------------|------------------|
| Lot 1 – Doilies | 10 – Tablecloth |
| 2 – Wall Hangings | 11 – Stocking |
| 3 – Table Runners | 12 – Potholder |
| 4 – Napkins | 13 – Sun Catcher |
| 5 – Placemats | 14 – Hand Towels |
| 6 – Picture | 15 – Tree Skirt |
| 7 – Applique | 16 – Ornaments |
| 8 – Pillows | 17 – Other |
| 9 – Sweatshirts | |

DIVISION P – CHILDREN'S NEEDLEWORK

Arlene Thune, Superintendent, 681-1740
13 Years and Under.

Prizes: 1st – \$2.00; 2nd – \$1.50; 3rd – \$1.00

Enter between 10 a.m. and 5 p.m. Wednesday, July 16.

All Pictures Ready For Hanging.

CLASS 1 – EMBROIDERY

- | | |
|------------------|----------------|
| Lot 1 – Picture | 5 – Dish Towel |
| 2 – Wall Hanging | 6 – Pillow |
| 3 – Linens | 7 – Other |
| 4 – Clothing | |

CLASS 2 – APPLIQUE

- Lot 1 – Any Article

CLASS 3 – MACRAME

- Lot 1 – Plant Holder 2 – Wall Hanging 3 – Other

CLASS 4 – CROSS-STITCH

- | | |
|-------------------------------|-----------------------|
| Lot 1 – Pillow Cases (2) | b. Over 25 Sq. Inches |
| 2 – Linens | 4 – Pillow |
| 3 – Picture or Wall Hanging | 5 – Other |
| a. Mini – Under 25 Sq. Inches | |

CLASS 5 – COUNTED CROSS-STITCH

- | | |
|-------------------------------|--------------------|
| Lot 1 – Scarf or Runner | d. Word or Sayings |
| 2 – Picture | 3 – Wall Hanging |
| a. Mini – Under 25 Sq. Inches | 4 – Bell Pull |
| b. Over 25 Sq. Inches | 5 – Pillow |
| c. Samplers | 6 – Other |

Have fun on the farm and stay healthy!



Even healthy, well cared for animals can have germs that can make people sick.

Keep food and drinks out of animal areas

This includes bottles, sippy cups, and pacifiers
You don't want to get germs on them



Wash your hands with soap and water

Wash hands after visiting the animals and before eating
Don't just use hand sanitizer. It doesn't work against all germs

Don't touch your mouth

That's how germs get in your body and make you sick



Wear appropriate clothing and shoes

Such as sturdy shoes and clothes you can get dirty
When you get home, change your clothes and shoes and wash them

Don't touch the farm equipment

Farm equipment can be dangerous
Stay with your group



If you are pregnant, under age 5, over age 65, or have a compromised immune system, you are at higher risk for more serious infections.

See you soon!



Minnesota Department of Health
Zoonotic Diseases Unit
651-201-5414 or 1-877-676-5414
www.health.state.mn.us




View the Antique Tractors On Display During The Fair

CLASS 6 – KNITTING

- | | | |
|-----------------|---------------------------|---------------|
| Lot 1 – Sweater | 3 – Mittens, Cap or Scarf | 5 – Dishcloth |
| 2 – Slippers | 4 – Doll Clothes | 6 – Other |

CLASS 7 – NEEDLEPOINT

- | | | | |
|-----------------|------------------|------------|-----------|
| Lot 1 – Picture | 2 – Wall Hanging | 3 – Pillow | 4 – Other |
|-----------------|------------------|------------|-----------|

CLASS 8 – CROCHETING

- | | | | |
|---------------------------|------------------|---------------|------------|
| Lot 1 – Slippers | 3 – Doll Clothes | 5 – Potholder | 7 – Pillow |
| 2 – Cap, Scarf or Mittens | 4 – Afghan | 6 – Dishcloth | 8 – Other |

CLASS 9 – WEAVING

- | | | | |
|-------------------|------------------|----------|-----------|
| Lot 1 – Potholder | 2 – Wall Hanging | 3 – Belt | 4 – Other |
|-------------------|------------------|----------|-----------|

CLASS 10 – LATCH HOOK

- | | | |
|--------------------------------|-------------|-----------|
| Lot 1 – Rug, Braided or Hooked | 3 – Picture | 5 – Other |
| 2 – Wall Hanging | 4 – Pillow | |

CLASS 11 – HARDANGER

- | | | | |
|---------------|---------------|------------------|-----------|
| Lot 1 – Doily | 2 – Bell Pull | 3 – Framed Piece | 4 – Other |
|---------------|---------------|------------------|-----------|

CLASS 12 – HOLIDAY DECORATIONS

- | | | |
|----------------------|---------------|---------------|
| Lot 1 – Wall Hanging | 4 – Picture | 7 – Potholder |
| 2 – Napkins | 5 – Pillows | 8 – Ornaments |
| 3 – Placemats | 6 – Stockings | 9 – Other |

DIVISION QA – ADULT SEWING

Superintendent: Jodi Peters 378-4432 or 689-5253

Entries between 10 a.m. - 5 p.m. Wednesday, July 15. Cleaned and Pressed Entries.
Over 18 years of age

DIVISION QB – STUDENT SEWING

Superintendent: Jodi Peters 378-4432

Entries between 10 a.m. - 5 p.m. Wednesday, July 15, Cleaned and Pressed Entries.
14-18 years of age

Use same lots for QA and QB

CLASS 1 – FORMAL WEAR

Prizes: 1st – \$3.00; 2nd – \$2.50; 3rd – \$2.00

- | | | |
|-----------------------|-----------------------|-----------|
| Lot 1 – Wedding Dress | 3 – Veils | 5 – Other |
| 2 – Formals | 4 – Flower Girl Dress | |

CLASS 2 – LADIES' WEAR

Prizes: 1st – \$2.50; 2nd – \$2.00; 3rd – \$1.50

- | | | |
|--------------------------------|---------------------------------------|-----------------------|
| Lot 1 – Dress, cotton or blend | 9 – Skirts, wool or wool like | 17 – Sport Sets |
| 2 – Dress, synthetic | 10 – Blouse | 18 – Aprons |
| 3 – Dress, wool or wool like | 11 – Housecoat, Robe or Sleepwear | 19 – Vinyl or Leather |
| 4 – Coat | 12 – Jumper | 20 – Sweatshirt |
| 5 – Slacks, synthetic, cotton | 13 – Jacket, synthetic or poly/cotton | 21 – Hair Accessory |
| 6 – Slacks, wool or wool like | 14 – Jacket, wool or wool blend | 22 – Purse, Totes |
| 7 – Skirts, synthetic | 15 – Vest | 23 – Shorts |
| 8 – Skirts, cotton or blend | 16 – Cape | 24 – Other |

CLASS 3 – MEN'S WEAR

Prizes: 1st – \$2.50; 2nd – \$2.00; 3rd – \$1.50

- | | | |
|------------------------------------|---------------------------------------|-----------|
| Lot 1 – Shirt, cotton or synthetic | 4 – Slacks/Jeans | 7 – Vest |
| 2 – Shirt, wool or wool like | 5 – Sport Jacket, synthetic or cotton | 8 – Other |
| 3 – Sleepwear | 6 – Sport Jacket, wool or wool like | |

CLASS 4 – CHILDREN'S WEAR

Prizes: 1st – \$2.50; 2nd – \$2.00; 3rd – \$1.50

- | | | | |
|-------------------------------|------------------|-----------------|-----------------|
| Lot 1 – Dress, fancy | 5 – Blouse | 11 – Boy's Pant | 17 – Vest |
| 2 – Dress, plain | 6 – Slacks/Jeans | 12 – Suit | 18 – Sweatshirt |
| 3 – Coat, cotton or synthetic | 7 – Shorts | 13 – Sport Set | 19 – Overalls |
| 4 – Coat, wool or wool like | 8 – Shirt | 14 – Apron | 20 – Other |
| like | 9 – Jumper | 15 – Jacket | |
| | 10 – T-Shirt | 16 – Snowsuit | |

CLASS 5 – INFANT WEAR

Prizes: 1st – \$2.50; 2nd – \$2.00; 3rd – \$1.50

- | | | | |
|---------------|-------------------|----------------------|-----------|
| Lot 1 – Dress | 3 – Bib | 5 – Sleeper, Onesies | 7 – Other |
| 2 – Coat | 4 – Cap or Bonnet | 6 – Boy's Suit | |

CLASS 6 – REMODELED GARMENTS

Please enclose an explanation of how it was remodeled.

Prizes: 1st – \$2.50; 2nd – \$2.00; 3rd – \$1.50

- | | | |
|---------------|------------|-----------|
| Lot 1 – Dress | 3 – Slacks | 5 – Other |
| 2 – Coat | 4 – Shirt | |

CLASS 7 – HOUSEHOLD ITEMS

Prizes: 1st – \$2.50; 2nd – \$2.00; 3rd – \$1.50

- | | | | |
|----------------------------|-------------------------|---------------|--------------------------|
| Lot 1 – Towels | 5 – Holiday Decorations | d. Placemats | 7 – Pillowcase |
| 2 – Table Cloth or Napkins | a. Wall Hanging | e. Banner | 8 – Stuffed Animals/Toys |
| 3 – Casserole Covers | b. Wreaths | f. Other | 9 – Other |
| 4 – Placemats | c. Tree Skirts | 6 – Potholder | |

NORTHWOODS**LUMBER CO.®**

For All Your Building Needs

www.NorthwoodsLumber.com

Contractors and Homeowners Welcome

BEMIDJI

5102 Hwy 71 N

BLACKDUCK

25778 Hwy 71 NE

THIEF RIVER FALLS

1313 Main Ave N

HERE COMES THE FAIR*Dr. Kenton D. Kainz*

1302 Main Ave. N. • 218-681-5537

Enjoy the Fair

*Sister Sister*Call us today
for an appointment**218-653-1300**

313 1st Street E. Thief River Falls

Book online at:
SisterSisterSalon.GlossGenius.com**BLACK CAT**
SPORTS BAR & GRILL
THIEF RIVER FALLS, MN

1080 Hwy 32 S • TRF

**DINE IN
or
TAKE OUT**

- Burgers
- Chicken
- Pizza • Salads
- Appetizers

(218) 681-891036th Annual**4-H BLUE RIBBON
& CHAINSAW
SCULPTURE AUCTION**Come and support our
local 4-H youth- the Ag
leaders of tomorrow!**SATURDAY, JULY 18 - 3 P.M.****CATTLE BARN ON THE PENN. CO.
FAIRGROUNDS**

FOR MORE INFO, CHECK OUT PENNINGTON COUNTY 4-H ON FACEBOOK!



PENNINGTON COUNTY FAIR SHUTTLE

Pennington County Fair Shuttle

- FREE fair shuttle within the city limits of Thief River Falls:
 - T.H.E. Bus no longer has set pickup times at locations.
 - Call **218-686-6153** for a ride during the times listed below

FREE shuttle within the city limits of Thief River Falls:

- Wednesday – 3pm-8:30pm
- Thursday – 2pm-8:30pm
- Friday – 1pm-8:30pm
- Saturday – 10am-4pm
- Sunday – 8:30am-1:30pm

Phillips Iron & Metal, Inc.

Recycler • Mach • Metals • Brass • Copper • Aluminum Cans
Sell New & Used Steel

TONY & BEN MIRAMONTES
1107 Main Ave. North • Thief River Falls, Minnesota 56701
(218) 681-4231 • Fax: (218) 681-1923

You're invited!
Pre-Parade Party!
JULY 15, 2026

4:00 TO 7:00 PM

HOT DOGS
Available while supplies last!

FREE
PLEASE JOIN US FOR FREE FOOD & BOUNCY HOUSE FUN!

behind
ZION LUTHERAN CHURCH
on the grassy lot
505 N. Main Ave.
Thief River Falls

CLASS 8 – QUILT (Top Sewn By Machine)

Prizes: 1st – \$3.00; 2nd – \$2.50; 3rd – \$2.00

- Lot 1 – Hand Quilted – Self
 - a. Wool, pieced
 - b. Cotton, pieced
 - c. Knits, pieced
 - d. Applique (machine)
 - e. Embroidered (machine)
 - f. Flannel
 - g. Panel
 - h. Other
- 2 – Hand Quilted By Someone Else, Top Sewn By Exhibitor
 - a. Wool, pieced
 - b. Cotton, pieced
 - c. Knits, pieced
 - d. Applique
 - e. Embroidered
 - f. Flannel
 - g. Panel
 - h. Other
- 3 – Machine Quilted – Self
 - a. Wool, pieced
 - b. Cotton, pieced
 - c. Knits, pieced
 - d. Applique
 - e. Embroidered
 - f. Recycled
 - g. Flannel
 - h. Panel
 - i. Other
- 4 – Machine Quilted By Someone Else, Top Sewn By Exhibitor
 - a. Wool, pieced
 - b. Cotton, pieced
 - c. Knits, pieced
 - d. Applique
 - e. Embroidered
 - f. Recycled
 - g. Flannel
 - h. Panel
 - i. Other
- 5 – Long Arm Quilting Judged on Quilting Only
- 6 – Hand Tied
 - a. Wool, pieced
 - b. Cotton, pieced
 - c. Knits, pieced
 - d. Applique
 - e. Embroidered
 - f. Flannel
 - g. Panel
 - h. Other
- 7 – Crib – Hand or Machine Quilted
 - a. Pieced
 - b. Appliqued
 - c. Embroidered
 - d. Flannel
 - e. Panel
 - f. Other

CLASS 9 – PILLOW

Prizes: 1st – \$2.50; 2nd – \$2.00; 3rd – \$1.50

- Lot 1 – Sofa, Quilted
- 2 – Sofa, Appliqued
- 3 – Bed, Quilted
- 4 – Bed, Appliqued
- 5 – Floor
- 6 – Other

CLASS 10 – QUILTED ARTICLES

Prizes: 1st – \$2.50; 2nd – \$2.00; 3rd – \$1.50

- Lot 1 – Clothing Items
- 2 – Table Runners
- 3 – Wall Hanging
- a. Applique
- b. Piecwork
- c. Stained Glass
- d. Other
- 4 – Seasonal
- 5 – Household Items
- 6 – Sleeping Bags
- 7 – Toys
- 8 – Other

CLASS 11 – DOLL CLOTHES

Prizes: 1st – \$2.50; 2nd – \$2.00; 3rd – \$1.50

- Lot 1 – Outfit
- 2 – Quilt
- 3 – Other

CLASS 12 – RECYCLED ITEMS

Prizes: 1st – \$2.50; 2nd – \$2.00; 3rd – \$1.50

- Lot 1 – Mittens
- 2 – Totes
- 3 – Machine Rug
- 4 – Other

BORDER BANK

Customer first.
Community focused.

www.border.bank
Member FDIC

DIVISION QC – CHILDREN’S SEWING

CLASS 1 – GARMENTS

Prizes: 1st – \$2.50; 2nd – \$2.00; 3rd – \$1.50

- | | | | | |
|------------------|------------|----------------|------------------|------------|
| Lot 1 – Dress | 5 – Skirt | 9 – T-Shirt | 13 – Vest | 17 – Other |
| 2 – Jumper | 6 – Apron | 10 – Sleepwear | 14 – Jacket | |
| 3 – Slacks/Jeans | 7 – Suit | 11 – Robe | 15 – Sweatshirt | |
| 4 – Blouse | 8 – Shorts | 12 – Shirt | 16 – Sweat Pants | |

CLASS 2 – DOLL CLOTHES

Prizes: 1st – \$2.00; 2nd – \$1.50; 3rd – \$1.00

- | | | | |
|---------------|-----------|------------|-----------|
| Lot 1 – Dress | 3 – Hat | 5 – Pillow | 7 – Other |
| 2 – Coat | 4 – Quilt | 6 – Toy | |

CLASS 3 – OTHER SEWN ITEMS

Prizes: 1st – \$2.00; 2nd – \$1.50; 3rd – \$1.00

- | | | |
|-----------------------------|-------------------|---------------------|
| Lot 1 – Quilt | 5 – Seasonal | 9 – Stuffed Animals |
| 2 – Pillows | 6 – Kitchen Items | 10 – Other |
| 3 – Table Runners/Placemats | 7 – Pet Items | |
| 4 – Wall Hangings | 8 – Pillowcases | |



2026 PENNINGTON COUNTY FAIR COLORING CONTEST

For ages 3-11. Pickup at 5 p.m. on Sunday

Please bring your completed coloring page to the Front Table in the Huck Olson Arena. Prizes awarded,

Name: _____ Age: _____

City: _____

Phone: _____

Pennington Co. Fair

POWER WHEELS


DEMO DERBY

Sunday, July 19th

In Front of the Grandstand
before the Demo Derby

RULES


1. Any regular electric Power Wheel is allowed. 4-Wheeler type vehicles are allowed, however the child's legs must be protected.
2. Kids 3-9 years of age may participate.
3. Helmets must be worn, bicycle helmets can be used.
4. The vehicle is allowed to have UP TO a 12-volt lawn mower battery, which cannot be mounted in the passenger seat and the battery must be secured and sealed away from the child.
5. All doors and tailgates must be strapped shut. No sharp edges. Use zip ties or duct tape or other flexible product for making them stay shut.
6. Tires may be covered in duct tape to prevent them from breaking. All tires can be wrapped with rubber for traction.
7. Motor must remain stock. The only modification you may use that will be allowed is using a lawn mower battery.
8. Decorative changes can be made to the Power Wheel to make it look like a derby car, however there can be no reinforcement to the Power Wheel. Changes and additions are only decorative, such as header pipes sticking up or painting the car, etc.
9. Remember this is to be something fun for the kids as well as the parents!
10. Payouts will be as follows:
Prize will be given for best looking Power Wheel.
Prize will be given for most bumps.
11. Please pre-register so we are sure we have prizes for all participants.
12. **To preregister, or if you have questions, please call Joey Halvorson at (218) 689-0608**
13. 5 lb. bag of sand for weight is allowed. Must be in a bag inside the vehicle.



SQUARE 100 Pennington Ave
218-681-4552

MAIN 220 Main Ave. S.
218-681-8888

PETRO Hwy 1 & 59
218-681-3546




We are a small, faith based, family owned boutique that sells Children's apparel, books, Women's Plus size apparel, decor, unique gifts & MORE.

littleblessingsboutique7@gmail.com

103 3rd St. E. | Thief River Falls

BREASTFEEDING STATION AVAILABLE
HANDICAPPED ACCESSIBLE

Skalsky Electric, Inc.
Bruce Skalsky, Licensed Master Electrician
~ Commercial ~ Industrial ~ Residential ~
~ PLC ~ Automated Controls ~

Bus: (218) 964-5720
Fax: (218) 964-5720
Emergency: (218) 686-4757


12360 Center Street East
St. Hilaire, MN 56754

NORTHERN
motors, inc.
THIEFRIVER FALLS FIND NEW ROADSSM

(800) 955-6053 • (218) 681-4820
1112 3rd Street West • THIEF RIVER FALLS, MN
www.northernmotorsinc.com



Mutton Bustin



Fri. and Sat.
At The Bullride
(Maximum weight 60 lbs.)
Enter by Calling
Thief River Radio - 681-1230

DIVISION R – ARTS & CRAFTS DEPT.

Superintendents: Gale Cota 681-4570, Trudy Hyland 378-4233

Prizes: 1st – \$2.50; 2nd – \$2.00; 3rd – \$1.50

CLASS 1 – PICTURES

All Pictures Must Be Framed And Ready To Hang. (Please do not use serrated tooth hangers.)

- Lot 1 – Oil Painting
- 2 – Watercolor Painting
- 3 – Acrylic Painting
- (Use these sublots for each of lots 1-3)
- a. Still life
- b. Portrait
- c. Landscape
- d. Seascape
- e. Animal
- f. Flowers
- g. Birds
- h. Abstract
- i. Winterscape
- j. Painted Buy
- k. Panoramic
- l. Collage
- m. Other
- 4 – Drawings
- (Use these lots for each of lots a-h)
- 1. Still Life
- 2. Portrait
- 3. Landscape
- 4. Seascape
- 5. Animal
- 6. Flowers
- 7. Birds
- 8. Abstract
- 9. Winterscape
- 10. Vehicle
- 11. Other
- a. Pencil
- b. Colored Pencil
- c. Pen
- d. Marker
- e. Charcoal
- f. Crayon
- g. Chalk
- h. Other
- 5 – Collage
- 6 – Calligraphy
- 7 – Painting On Wood
- 8 – Paint By Number
- 9 – Prints
- a. Wood Cut
- b. Silk Screen
- c. Linoleum
- d. Other
- 10 – Batik
- 11 – Sketch Books
- 12 – Air Brush Painting
- 13 – Saw Painting
- 14 – Sculpture
- a. Clay
- b. Wire
- c. Wood
- d. Metal
- e. Papier-mache
- f. Other
- 15 – Original Computer Art
- a. Drawing
- b. Painting
- 16 – Mixed Media
- 17 – Oil Pastel
- 18 – Alcohol Ink art
- a. Landscape
- b. Foil
- c. Abstract
- d. Other
- 19 – Other

CLASS 2 – CRAFTS

- Lot 1 – Felt Articles
- 2 – Quilling
- 3 – Decorated Trays & Plates
- 4 – Lamps
- 5 – Copper Tooling
- 6 – Decoupage
- 7 – Rosemaling
- 8 – Tole Painting
- 9 – Flower Arrangements
- a. Dried Flowers/Silk
- b. Wreath
- c. Corsage
- d. Other
- 10 – String Art
- 11 – Stained Glass
- a. Lead Came
- b. Copper Foil
- c. Plastic
- d. Other
- 12 – Candlemaking
- 13 – Seed, Shell, Rock Craft
- 14 – Diamond Art
- a. People
- b. Portrait
- c. Flowers
- d. Animals
- e. Landscape
- f. Birds
- g. Seascape
- h. Insect
- i. Abstract
- j. Other
- 15 – Folk Art
- 16 – Soft Sculpture
- 17 – Doll (Made and dressed by exhibitor)
- 18 – Rag Baskets
- 19 – Shirt Painting
- 20 – Puppets
- 21 – Straw Weaving
- 22 – Baskets
- a. Large Reed
- b. Small Reed
- 23 – Diorama
- 24 – Jewelry
- a. Cast Pewter
- b. Scroll
- c. Coil Chains
- d. Semiprecious Stone
- e. Silver Work
- f. Beaded
- g. Plastic
- h. Other
- 25 – Etching
- a. Glass
- b. Other
- 26 – Fabric
- a. Photo Albums
- b. Other
- 27 – One Step Painting
- a. Gazing Balls
- b. Stationery
- c. Metal Painting
- d. Other
- 28 – Painting on
- a. Metal
- b. Rock
- 29 – Wood
- a. Painted
- b. Wall Hanging
- c. Useful Articles
- d. Ornaments
- e. Animals
- f. Plaques
- g. Toys
- h. Pre-cut or Kit
- i. Novelty
- j. Other
- 30 – Scrapbooks
- 31 – Coin purses
- 32 – Lawn Ornaments
- 33 – Paper Craft
- 34 – Spun Wool
- 35 – Repurposed or Recycled Items
- 36 – Clay Art
- 37 – Creative Coloring
- a. Marker
- b. Colored Pencil
- 38 – Barn Quilt
- 39 – Tie Quilt
- 40 – Other

CLASS 3 – LEATHERWORK

- Lot 1 – Billfold
- 2 – Purse
- 3 – Key Case
- 4 – Belt
- 5 – Comb Case
- 6 – Collection
- 7 – Other

CLASS 4 – CERAMICS

- Lot 1 – Traditional
- a. Hand Constructed
- b. Wheel Thrown
- c. Other
- 2 – Modernistic
- a. Hand Constructed
- b. Wheel Thrown
- c. Other
- 3 – Molded Forms (Bisque)
- a. Painted
- b. Glazed
- c. Chalked
- d. Combination
- 4 – Mosaics
- 5 – Tile
- 6 – Other

IN CASE OF WEATHER EMERGENCY GO TO THE RALPH ENGELSTAD ARENA

CLASS 5 – PORCELAIN ART (China Painting)

Lot 1 – Dishes 2 – Mugs 3 – Place Settings 4 – Other

CLASS 6 – DECORATIONS

Lot 1 – Greeting Cards 4 – Wreath 7 – Doll
2 – Ornaments 5 – Wall Hanging 8 – Other
3 – Table Decorations 6 – Wooden Wall Display

CLASS 7 – LIQUID EMBROIDERY

Lot 1 – Towels (2) 5 – Placemats 9 – Holiday Item
2 – Tablecloths 6 – Scarf or Runner 10 – Wall Hanging
3 – Pillow Cases 7 – Crib Spread 11 – Other
4 – Pillows 8 – Clothing

CLASS 8 – CREATIVE WRITING

Lot 1 – Poetry 3 – Story - other 6 – Other
2 – Storybook - Childrens with
pictures (either drawn or photos) 4 – Cards
5 – Calligraphy

CLASS 9 – NEEDLE FELTING

Lot 1 – Animal 2 – People 3 – 2-D Felting 4 – Other

CLASS 10 – 3D COMPUTER PROGRAM PRINTING

Lot 1 – Plastic b. Animal d. Seasonal f. Mythical Creature h. Other
a. Floral c. Abstract e. People g. Movable Parts

CLASS 11 – LATHE ART

Lot 1 – a. Landscape b. Abstract c. Wall Hanging d. Other

CLASS 12 – TABLETOP GAMING ART

Lot 1 – Kit Bashing (Customizing) b. 3D Printed d. Customized Kit Painted
a. Painted Kit c. Non Painted e. Other

CLASS 13 – AI GENERATED PICTURES

Lot 1 – Animal 2. Other

CLASS 14 – FUSED GLASS

Lot 1 – Dream Catcher 3. Flowers 5. Ornaments
2. Dishes 4. Animals 6. Wall Hanging

DIVISION RT – TAXIDERMY

All entries in the taxidermy class will have to follow Minnesota Game and Fish Laws which pertain to taxidermy. Any entrants who have questions about mounting specimens should contact their local conservation officer or D.N.R. office prior to obtaining or mounting the specimen.

Lot 1 – Birds 2 – Small Animals 3 – Large Animals 4 – Fish

DIVISION S – CHILDREN'S ARTS & CRAFTS DEPT.

Ages 8 and under

Denice Nelson, Superintendent, 686-1248; Assistant: Vicky Breiland

Enter between 10 a.m. and 5 p.m. on Wednesday, July 16

Pictures should be ready to hang. Framing nice, not required. Pictures must recognizably fit in a category.

Adult additions will lower judged ranking.

Note: Using two materials (example: pencil and crayon) makes it a mixed media.

Prizes: 1st – \$2.00; 2nd – \$1.50; 3rd – \$1.00

All entrants will receive ribbons.

Use the following sublots in Class 1, 2, 3 and 4 for each lot.

a. Realistic	e. Patriotic	i. Water Life
b. People	f. Science Fiction	j. Wilderness
c. Animals	g. Seasonal	k. Flowers
d. Abstract/Experimental	h. Scientific	l. Other

CLASS 1 – ORIGINAL PAINTING

Lot 1 – Tempera 3 – Fingerpaint 5 – Acrylic
2 – Watercolor 4 – Mixed Media 6 – Other

CLASS 2 – ORIGINAL DRAWING

Lot 1 – Pencil 4 – Colored Pencil 8 – Computer Generated (**Must be done by
2 – Pen and Ink (BALLPOINT IS**
FINE)
3 – Oil Pastel 5 – Crayon **child alone**)
6 – Marker 9 – Other
7 – Mixed Media

CLASS 3 – ORIGINAL DESIGNS/MAZES

Lot 1 – Paint (any type) 4 – Chalk/Oil Pastel 7 – Mixed Media
2 – Pencil 5 – Charcoal 8 – Computer Generated
3 – Ink 6 – Crayon/Marker/Colored Pencil 9 – Other

CLASS 4 – PRINTS/RUBBINGS

Lot 1 – Rubbings b. Color 3 – Other
a. Black and White 2 – Handprint/Footprint

CLASS 5 – SAME AS DIVISION T

Please see items for this class under the Division T listing.

DIVISION T – CHILDREN'S ARTS & CRAFTS DEPT.

Ages 9 - 12 years

Lois Benson 683-3120

Enter between 10 a.m. and 5 p.m. on Wednesday, July 15

Pictures should be ready to hang. Framing nice, not required.

Adult additions will lower judged ranking.

Pictures must recognizably fit in a category.

Note: Using two materials (example: pencil and crayon) makes it a mixed media.

Make sure the correct lot is chosen. Incorrect choice will affect judging.

Prizes: 1st – \$2.00; 2nd – \$1.50; 3rd – \$1.00

All entrants will receive ribbons.

Use the following sublots in Class 1, 2, 3 and 4 for each lot.

a. Landscapes/Seascapes	g. Science Fiction
b. Still Life	h. Portrait
c. Floral	i. Seasonal
d. Animals	j. Logos
e. People	k. Other
f. Abstract	

CLASS 1 – ORIGINAL PAINTING

Lot 1 – Oil 5 – Finger Paint
2 – Acrylic 6 – Dry Brush
3 – Watercolor 7 – Mixed Media
4 – Tempera 8 – Other

CLASS 2 – ORIGINAL DRAWING

Lot 1 – Pencil 7 – Marker
2 – Pen and Ink 8 – Mixed Media
3 – Chalk 9 – Scratch Art
4 – Oil Pastel 10 – Computer Generated (**Must
5 – Colored Pencil be done by child alone**)
6 – Crayon 11 – Other

CLASS 3 – ORIGINAL DESIGNS/MAZES

Lot 1 – Paint (any type) 8 – Paper
2 – Pencil 9 – 3-Dimensional
3 – Ink 10 – Oil Pastel
4 – Chalk 11 – Marker
5 – Crayon 12 – Colored Pencil
6 – Mixed Media 13 – Other
7 – Computer Generated

CLASS 4 – PRINTS/RUBBINGS

Lot 1 – Print Making 2 – Rubbings
a. Black and White a. Black and White
b. Color b. Color
3 – Other

**We'll Be Serving From 10 AM To 11 PM Daily
On The Fairgrounds!**

of-da Tacos

**SENIOR CITIZEN PROGRAM
TRI-VALLEY BUS GARAGE**

Friday, July 17 • 1:30 P.M.

Honoring Pennington Co. Outstanding Senior Citizens

Refreshments Served

*Program Speaker Andy Wells, Jr. Growing up in East
Pennington County on his way to entrepreneurship*

CLASS 5 – OTHER ART & CRAFT MEDIA

This class is for both Division S and Division T

- | | | | | | | |
|-------------------------------|-------------------|-------------------------------|---------------------------------------|-------------------------------------------------------------------------------------------------------------------|-----------------------------------|-----------------------------------|
| Lot 1 – Art by Number/Pattern | a. Paint | 8 – Plastic Crafts | b. Decorated | a. Original | 14 – Masks | b. Hanging |
| a. Paint | b. Crayon/Marker | a. Original | 10– Sculpture | b. Pattern/Kit | a. Original | c. Wall Use/Magnets |
| b. Sand Art | c. Mixed Media | 1. Floral | a. Modeling - Clay | b. Decorated Form | b. Molded | d. Floor/Ground Use |
| c. Crayon | d. Nature | 2. Animal | b. Modeling - Fimo,
Sculpay, Other | a. Formed | a. 2-dimensional | e. Ornaments |
| d. Colored Pencil | e. Other | 3. People | c. Cast (Mold Used) | b. Molded | b. 3-dimensional | 26 – Home Décor Craft |
| e. Marker | 6 – String Art | 4. Seasonal | d. Wire | a. Original | a. Free Standing (small) | a. Free Standing (small) |
| 2 – Diorama/
3-Dimensional | a. 2-Dimensional | 5. Abstract | g. Paper-mâché | b. Decorated Form | b. Hanging | b. Hanging |
| a. Original | b. 3-Dimensional | 6. Patriotic | h. Bottle Art | a. Formed | c. Wall Use/Magnets | c. Wall Use/Magnets |
| b. Complete/Built from
Set | 7 – Paper Crafts | 7. Other | i. Other | b. Molded | d. Floor/Ground Use | d. Floor/Ground Use |
| 3 – Mobiles | a. Cut | b. Pattern/Kit | 11 – Models | a. 2-dimensional | e. Frames | e. Frames |
| a. Original | b. Torn | 1. Floral | a. Original | b. 3-dimensional | f. Other | f. Other |
| b. Complete/Built
from Set | c. Folded | 2. Animal | b. Pattern | 17 – Original Written and/or
Illustrated Works (Not to in-
clude colored in copied pat-
terns/pictures.) | 27 – Craft of Current Popularity | 27 – Craft of Current Popularity |
| 4 – Posters | d. Woven | 3. People | c. Kit | a. Original | a. Original | a. Original |
| a. Original | e. Picture/Design | 4. Seasonal | 12 – Ceramics | 1. Scrapbooks | b. Pattern/Kit | b. Pattern/Kit |
| b. Completed | f. Mixed media | 5. Abstract | a. Hand Built | 2. Books or Stories | 28 – Scientific Representation | 28 – Scientific Representation |
| 5 – Collage | g. 3-Dimensional | 6. Patriotic | b. Painted | 3. Poems | a. Charts | a. Charts |
| | h. Paper making | 7. Other | c. Decorated | 4. Cards | b. Graphs | b. Graphs |
| | i. Scratch Art | 9 – Tile (Ceramic or Plastic) | 13 – Basketry | b. Calligraphy | c. Diagrams | c. Diagrams |
| | j. Seasonal | a. Mosaics | | c. Other | d. Photos | d. Photos |
| | | | | d. Other | e. Drawn Pictures | e. Drawn Pictures |
| | | | | 18 – Handmade Toys | f. Mixed Media | f. Mixed Media |
| | | | | a. Dolls | 29 – Card/Book Making | 29 – Card/Book Making |
| | | | | b. Puppets | a. Scrapbooking | a. Scrapbooking |
| | | | | c. Instruments | b. Albums | b. Albums |
| | | | | d. Other | c. Cards | c. Cards |
| | | | | 19 – Collections | d. Original/Bookmaking | d. Original/Bookmaking |
| | | | | a. Natural Materials | 30 – Lego | 30 – Lego |
| | | | | b. Stamps/Coins | a. Original | a. Original |
| | | | | c. Self-Made Items | b. Pattern | b. Pattern |
| | | | | d. Other Items | c. Kit | c. Kit |
| | | | | 20 – Fabric Crafts | d. Moveable Parts | d. Moveable Parts |
| | | | | a. Tye-Dye | e. Mixed | e. Mixed |
| | | | | b. Paint/Liquid Embroidery | f. Realistic | f. Realistic |
| | | | | 1. Original | 31 – Foam Craft | 31 – Foam Craft |
| | | | | 2. Pattern | a. Shapes | a. Shapes |
| | | | | c. Marker/Crayon | b. Letters | b. Letters |
| | | | | 1. Original | c. Structure | c. Structure |
| | | | | 2. Pattern | d. Seasonal | d. Seasonal |
| | | | | d. Latch Hook | e. Mixed Media | e. Mixed Media |
| | | | | 1. Original | f. Frames | f. Frames |
| | | | | 2. Pattern | g. Childrens Wear/
Accessories | g. Childrens Wear/
Accessories |
| | | | | e. Felt Craft | 32 – K-nex/Other | 32 – K-nex/Other |
| | | | | 1. Original | a. Original | a. Original |
| | | | | 2. Kit | b. Pattern | b. Pattern |
| | | | | f. Fleece | c. Kit | c. Kit |
| | | | | 1. Blanket | d. Moveable Parts | d. Moveable Parts |
| | | | | 2. Pillow | e. Mixed | e. Mixed |
| | | | | 3. Other | 33 – Erector Sets | 33 – Erector Sets |
| | | | | g. Other Fabric Craft | a. Original | a. Original |
| | | | | 1. Original | b. Pattern | b. Pattern |
| | | | | 2. Pattern | c. Kit | c. Kit |
| | | | | h. Yarn Art | d. Moveable Parts | d. Moveable Parts |
| | | | | 21 – Jewelry, Barrettes | e. Mixed | e. Mixed |
| | | | | a. Original | 34 – Recycled Craft | 34 – Recycled Craft |
| | | | | b. Pattern/Kit | a. Plastic | a. Plastic |
| | | | | c. Bracelet | b. Metal | b. Metal |
| | | | | d. Necklace | c. Glass | c. Glass |
| | | | | 22 – Quilling, other native craft | d. Other | d. Other |
| | | | | a. Original | 35 – Duct Tape Art | 35 – Duct Tape Art |
| | | | | b. Pattern/Kit | 36 – Creative Coloring | 36 – Creative Coloring |
| | | | | 23 – Bead Work | a. People | a. People |
| | | | | a. Original | b. Animals | b. Animals |
| | | | | b. Pattern/Kit | c. Aquatic | c. Aquatic |
| | | | | c. Bracelet | d. Cartoon | d. Cartoon |
| | | | | d. Necklace | e. Other | e. Other |
| | | | | 24 – Novice Woodcraft
(Simple) | 37 – Macrame | 37 – Macrame |
| | | | | a. 2-dimensional Original | 38 – Slime | 38 – Slime |
| | | | | b. 3-dimensional Original | 39 – Soap | 39 – Soap |
| | | | | c. Pattern/Kit of above types | 40 – Sewing | 40 – Sewing |
| | | | | d. Simple Cuts & Painted | 41 – Diamond Art | 41 – Diamond Art |
| | | | | e. Simple Burning | 42 – Iron Beads (Pearly Beads) | 42 – Iron Beads (Pearly Beads) |
| | | | | f. Basic Bird Feeders/
Houses | 43 – Other | 43 – Other |
| | | | | 1. Original | | |
| | | | | 2. Kit/Preformed
Pieces | | |
| | | | | g. Popsicle Stick Art | | |
| | | | | 1. Frames | | |
| | | | | 2. Structure | | |
| | | | | 3. Painted | | |
| | | | | 4. Home Decor | | |
| | | | | h. Decopage | | |
| | | | | 25 – Seasonal Decorations | | |
| | | | | a. Free Standing (small) | | |

(County Fair): 2026 Pennington County Fair 4-H Schedule of Events

**All dates and times are subject to change. - Changes made will be communicated to 4-H families and volunteers via email and the Pennington County 4-H Facebook page. **Schedule was last updated 5/18 /2026*

COUNTY FAIR WEEK (July 13–19)**Monday, July 13**

10:00 a.m.–Noon — Pre-Fair Clean-Up & Set-Up at the 4-H Food Stand & The Huck.

2 adults and 2 youth from the following clubs: Happy Acres, Highland, Kratka, and Satellite clubs

Tuesday, July 14

2:30 - 6:30 pm — General Project Exhibit Judging at the Huck

Wednesday, July 15

9:00 a.m. — 4-H Dog Show at the Tri-Valley Bus Garage

Thursday, July 16

9:00 a.m.– 3:00 p.m. — Livestock Entry Day in the barns

10:00 a.m. — 4-H Horse Show at the Horse Arena, Fairgrounds

5:00 p.m. — Weigh Market Livestock at the Hartz Livestock Arena, Fairgrounds

6:30 p.m. — Meat Goat Show at the Hartz Livestock Arena, Fairgrounds

Friday, July 17

8:00 a.m. — Swine, Sheep, and Beef Judging at the Hartz Livestock Arena, Fairgrounds

10:00 a.m. — Rabbit Judging at the Rabbit Barn, Fairgrounds

2:30 p.m. — Poultry Judging at the Poultry Barn, Fairgrounds

Saturday, July 18

8:00 a.m. — Dairy Goat Judging at the Hartz Livestock Arena, Fairgrounds

Following Dairy Goat — Dairy Judging at the Hartz Livestock Arena, Fairgrounds

TBA — Livestock Demonstrations at the Hartz Livestock Arena, Fairgrounds

3:00 p.m. — 4-H Blue Ribbon Auction at the Hartz Livestock Arena, Fairgrounds

Sunday, July 19

3:00 p.m. — 4-H Program

(Fashion Revue, Grand Champion Recognition, Performing Arts, Herdsmanship, 4-H Hall of Fame, Grand Champion Photos) at the Bandshell

4:45 p.m. — General Encampment State Fair Meeting at the Huck

5:00–7:00 p.m. — Exhibit & Livestock Release. Premium checks will be available the week following fair

Livestock — Barns

General — The Huck



DIVISION U – STUDENT ART/CRAFTS

Ages 13-18 Years

Dawn Hanson, 378-4328 or Linda Bauer, 681-1625

Enter between 10 a.m. and 5 p.m. on Wednesday, July 15

Pictures Framed For Hanging.

Prizes: 1st – \$2.50; 2nd – \$2.00; 3rd – \$1.50

CLASS 1

- Lot 1 – Drawing
a. Chalk
b. Charcoal
c. Crayon
d. Pencil
e. Ink
f. Colored Pencil
g. Scratch Art
h. Oil Pastel
i. Markers

(Use these sublots
for each of lots a-i)

1. Perspective
 2. Portrait
 3. Animals
 4. Landscape
 5. Still Life
 6. Abstract
 7. Floral
 8. Buildings
 9. Wildlife
 10. Farm Animals
 11. Pets
 12. Sea life
 13. Seasonal
 14. Sports
 15. Patriotic
 16. Other
- 2 – Realistic Painting
a. Oil

- b. Watercolor
c. Acrylic
d. Collage
e. Other
- 3 – Modernistic Painting
a. Acrylic
b. Oil
c. Watercolor
d. Multi-Media
e. Other

(Use these sublots
for each of lots 2-3)

1. Still Life
 2. Portrait
 3. Landscape
 4. Seascape
 5. Animals
 6. Collage
 7. Other
- 4 – Sculpture
a. Casting
(Use of a Mold)
b. Construction
c. Carving
d. Modeling (Clay, etc.)
e. Relief Sculpture
f. Paper
g. Other
- 5 – Ceramics
a. Hand Constructed

- b. Wheel Thrown
c. Mold Formed
1. Figurines
2. Vases
3. Other
- 6 – Printing
a. Linoleum Block
b. Wood Block
c. Silk Screen
d. Metal Etching
e. Other
- 7 – Fabric
a. Batik
b. Macrame
c. Tye Dye
d. Printed
e. Blanket
f. Burlap
g. Other
- 8 – Jewelry
a. Copper Enameling
b. Hand Wrought Metal
c. Other
- 9 – Metal Craft
a. Copper Tooling
b. Other
- 10 – Papier-mache
11 – Decoupage
12 – Collage (Only)
13 – Posters

- 14 – Novelty Crafts
a. Leatherwork
b. Collections
c. Puzzles
d. Duct Tape
e. Other
- 15 – Candles
16 – Mosaics
17 – String Art
18 – Quilling
19 – Basketweaving
20 – Woodburning
21 – Glass Etching
22 – Creative Design
23 – Model Kit
24 – Paper Cutting
25 – Sand Art
26 – Beadwork
27 – Wood Carving
28 – Computer Generated Art
29 – Mixed Media
30 – Scrapbook
31 – Creative Writing
32 – K-nex and Legos
33 – Calligraphy
34 – Creative Coloring
35 – Macrame
36 – Soap
37 – Diamond Art
38 – Other

DIVISION V – ADULT PHOTOGRAPHY

18 and Over

Mary Bruggeman (218) 416-0817

Prizes: 1st – \$2.50; 2nd – \$2.00; 3rd – \$1.50

DIVISION W – CHILDREN'S PHOTOGRAPHY

17 and Under

Mary Bruggeman (218) 416-0817

Prizes: 1st – \$2.50; 2nd – \$2.00; 3rd – \$1.50

Enter Wednesday, July 15 between 10 a.m. and 5 p.m.

All photos must be taken by entrant.

Photographs must be mounted on poster board and placed in a clear plastic zipper storage bag or sheet protector.

Use a gallon storage bag for 8x10 photos and a quart storage bag for 5x7 photos, use a 2 gallon storage bag for 11x14 photos.

NO FRAMES, NO GLASS, PLEASE.

CLASS 1 – COLOR PHOTOGRAPHY

CLASS 2 – BLACK AND WHITE/SEPIA PHOTOGRAPHY

Same photo may not be used for Class 1 and Class 2

Use Same Lot Numbers for Adults (Division V) and children (Division W)

Individual Photos must be – 5x7, 8x10 or 11x14

- Lot 1 – Animals
a. Domestic or Farm Animal(s)
b. Wild Animal(s)
c. Wild Birds
d. Person/People with Animals
e. Insects
f. Action or movement
g. Fish, turtle, underwater animals
h. Portrait
i. Working
j. Other
- Lot 2 – Scenic
a. Buildings
b. Farm
c. Rural Scene
d. Landscape
e. Seasonal
f. Sunrise
g. Sunset
h. Water, Lake, Ocean, River
i. Natural Disaster or Phenomena
j. Night Scene
k. Urban Scene
l. Historical, Landmark, Vacation
m. Sky/Clouds

- n. Other
- 3 – People
a. Natural Light Portrait (one or more persons)
b. Artificial Light Portrait (one or more persons)
c. Self Portrait (hand held or made with a timer)
d. Environmental portrait (people at work or at home with surroundings)
e. Entertainers (one person or group)
f. Action or Movement (not sports)
- 4 – Plants
a. Single Bloom Flower
b. Multiple Bloom Flower
c. Fruits and/or Vegetables
d. Trees and/or Shrubs
e. Grain
f. Garden
g. Foliage
- 5 – Sports
a. Participant(s) In Action
b. Groups
- 6 – Miscellaneous
a. Humorous
b. Still Life
c. Patriotic

- d. Architectural
e. Fair/Festival
f. Fireworks
g. Transportation
h. Machinery
i. Other
- 7 – Special Photographic Techniques
a. Maximum Depth of Field
b. Narrow Depth of Field or Selective Focus
c. Silhouette
d. Other
- 8 – Digital Effects
a. Digitally Manipulated
b. Digitally Painted
c. Digital Collage or Mosaic
d. Use of Filters
e. Other
- 9 – Photo Sequence - 3 to 6 Photographs Mounted Together on Tag Board
Sequence photos or printed together, do not need to be in a clear plastic zipper storage bag.
a. Photos Related by Theme or Telling a Story
b. Photo Study of Same Subject with Different Photographic Techniques.

c. Panoramic Sequence

DIVISION X – WOODWORKING

Enter between 10 a.m. and 5 p.m. on Wednesday, July 15

Tracy Johnson, Supintendent 688-0038

Prizes: 1st – \$3.00; 2nd – \$2.50; 3rd – \$2.00

CLASS 1 – YOUNG WOODWORKERS

Age 18 and younger

- Lot 1 – Gun Cabinet
2 – China Hutch
3 – Picnic Table
4 – Table
5 – Chair
6 – Rocking Horse
7 – Bookcase
8 – Gun Rack
9 – Bird Feeder
- 10 – Birdhouse
11 – Shelves
12 – Cradle
13 – Breadboard
14 – Bookends
15 – Trivet

- 16 – Toolbox
17 – Plaque
18 – Child's Toy
19 – Woodturning
20 – Clock
21 – Woodburning
22 – Hand Carving
23 – Refinished Item
24 – Kit or Pre-Cut
25 – Bench
26 – Footstool
27 – Wood turning
28 – Crane/Catapult
29 – Snow Shoes
30 – Other

CLASS 2 – CARVING BY HAND

- Lot 1 – Waterfowl
2 – Upland Birds
3 – Nongame Birds
4 – Decoys
5 – Animals
6 – Fish
7 – Caricatures
8 – Low Relief
9 – High Relief
- 10 – Furniture
11 – Miniature
12 – Carved People
13 – Chip Carving
a. Box

- b. Plate
c. Chest
d. Cake Stand
e. Other
- 14 – Norwegian Boxes (Tee-na)
a. Large box
b. Small Box
- 15 – Bark Carving
a. Houses
b. Caricatures
c. Faces
d. Other
- 17 – Other

CLASS 3 – WOOD TURNING

- Lot 1 – Bowl
2 – Plate
3 – Lamp
4 – Table
5 – Chair

- 6 – Novelty
7 – Clock
8 – Cradle
9 – Pen & Pencil Set
10 – Other

CLASS 4 – LARGE FURNITURE

- Lot 1 – Cradle
2 – Desk
3 – Gun Cabinet
4 – Chest
5 – Chair
6 – Bookcase
7 – End Table
8 – Coffee Table
9 – Hall Table

- 10 – Dining Table
11 – China Hutch
12 – Cabinet
13 – Headboard
14 – Dresser
15 – Entertainment Center
16 – Coat Rack
17 – Wooden Swing
18 – Other

CLASS 5 – CHILD'S TOYS

- Lot 1 – Doll House
2 – Doll Furniture
3 – Doll Cradle
4 – Rocking Horse
5 – Car

- 6 – Train
7 – Carousel
8 – Toy Chest
9 – Wagon
10 – Bank
- 11 – Animals
12 – Music Box
13 – Novelty
14 – Other

CLASS 6 – PRE-CUT OR KIT

- Lot 1 – Doll House
2 – Clock
3 – Toy

- 4 – Cabinet
5 – Chest
6 – Other

CLASS 7 – REFINISHED ITEM

- Lot 1 – Table
2 – Chair
3 – Rocking Chair
4 – Trunk
5 – Chest
6 – Desk
7 – High Chair

- 8 – Wash Stand
9 – Ice Box
10 – China Hutch
11 – Upholstery
12 – End Table
13 – Other

CLASS 8 – PAINTED CRAFTWORK

- Lot 1 – Lawn Ornaments
2 – Bird House
3 – Home Crafts
4 – Jewelry Box
5 – Birds
6 – Animals

- 7 – Whirligigs
8 – Plaques
9 – Wind Chimes
10 – Silhouettes
11 – Barn
12 – Other

CLASS 9 – SCROLL SAW/ROUTER

- | | | |
|---------------|-------------------|--------------------|
| Lot 1 – Shelf | 6 – Clock | 11 – Fish Picture |
| 2 – Picture | 7 – Intarsia | 12 – Dog Picture |
| 3 – Cabinet | 8 – Picture Frame | 13 – Puppy Picture |
| 4 – Trivet | 9 – Music Box | 14 – Horse Picture |
| 5 – Sign | 10 – End Table | 15 – Other |

CLASS 10 – INLAY OR MARQUETRY

- | | | | |
|---------------------|-------------|----------------|-----------|
| Lot 1 – Jewelry Box | 2 – Picture | 3 – Gameboards | 4 – Other |
|---------------------|-------------|----------------|-----------|

CLASS 11 – WOODBURNING

- | | | |
|----------------------|----------------------|-----------------|
| Lot 1 – Wild Animals | 4 – Domestic Animals | 7 – Portrait |
| 2 – Birds | 5 – Scenic | 8 – Caricatures |
| 3 – Fish | 6 – Still Life | 9 – Other |

CLASS 12 – SMALL FURNISHINGS

- | | | |
|-----------------------|----------------------|-------------------------|
| Lot 1 – Single Shelf | 10 – Bookends | 19 – Candleholder |
| 2 – Series of Shelves | 11 – Picture Frame | 20 – Pizza Paddle |
| 3 – Quilt Rack | 12 – Flag Case | 21 – Lazy Susan |
| 4 – Clock | 13 – Display Case | 22 – Sewing Cabinet |
| 5 – Jewelry Box | 14 – Magazine Rack | 23 – Paper Towel Holder |
| 6 – Stool | 15 – Planter | 24 – Napkin Holder |
| 7 – Bench | 16 – Cribbage Boards | 25 – Other |
| 8 – Mirror | 17 – Cutting Board | |
| 9 – Caning | 18 – Birdhouse | |

CLASS 13 – GOURDS

- | | | |
|---------------------|-----------------------------|----------------------|
| Lot 1 – Bowl | 5 – Christmas Tree Ornament | 9 – Windchimes |
| 2 – Bird House | 6 – Birds | 10 – Miniature Gourd |
| 3 – Decorative Item | 7 – Musical Gourd | 11 – Gourd Jewelry |
| 4 – Carved Gourd | 8 – Vase | 12 – Other |

CLASS 14 – MINIATURE MODELS

- | | | |
|-----------------------|--------------------|----------------|
| Lot 1 – Dozer | 5 – Truck | 9 – Semi Truck |
| 2 – Front-End Loader | 6 – Motorcycle | 10 – Pickup |
| 3 – Skid Steer Loader | 7 – Combine | 11 – Backhoe |
| 4 – Car | 8 – Farm Equipment | 12 – Other |

CLASS 15 – UPHOLSTRY

- | | |
|---------------|--------------------|
| Lot 1 – Chair | 3 – Chair Cushions |
| 2 – Stool | 4 – Other |

DIVISION Y – SENIOR CITIZEN

Susan Olson, 681-7507 or Deb Fulton, 681-6299

Enter between 10 a.m. and 5 p.m. on Wednesday, July 16 – 60 - 80 years.
Exhibitors May Also List Articles For Sale If They Desire after judging**DIVISION Z – SENIOR CITIZEN**

Same Classes as Division X – 80 and Over.

Prizes: 1st – \$2.50; 2nd – \$2.00; 3rd – \$1.50

CLASS 1 – RUGS

- | | | |
|----------------------|-----------------------|-------------------|
| Lot 1 – Hooked, Wool | 4 – Crocheted, Cotton | 7 – Woven, Wool |
| 2 – Hooked, Cotton | 5 – Braided, Wool | 8 – Woven, Cotton |
| 3 – Crocheted, Wool | 6 – Braided, Cotton | 9 – Other |

CLASS 2 – QUILTS OR QUILTED ARTICLES

- | | | |
|----------------------------|-------------------------------|--------------------|
| Lot 1 – Pieced, Wool | 6 – Featherstitch, By Machine | 11 – Table Runner |
| 2 – Pieced, Cotton | 7 – Non-Quilted | 12 – Lap Quilt |
| 3 – Pieced, Silk | 8 – Baby Quilts | 13 – Wall Hangings |
| 4 – Quilted By Hand | 9 – Applique | 14 – Tied Quilts |
| 5 – Featherstitch, By Hand | 10 – Machine Quilted | 15 – Other |

CLASS 3 – WOODWORK

- | | | |
|-----------------------------|--------------------------|---------------------|
| Lot 1 – Carving | 5 – Shelves | 10 – Bowl |
| 2 – Furniture | 6 – Bird House | 11 – Chip Carving |
| 3 – Toys | 7 – Large Furniture Item | 12 – Relief Carving |
| 4 – Plaques & Wall Hangings | 8 – Small Furniture Item | 13 – Other |
| | 9 – Refinished | |

CLASS 4 – THRIFT SECTION

- | |
|------------------------------------------|
| Lot 1 – Anything Made From Used Material |
|------------------------------------------|

CLASS 5 – PILLOWS

- | | | |
|---------------|-----------------|----------------|
| Lot 1 – Knit | 4 – Smocked | 7 – Embroidery |
| 2 – Woven | 5 – Needlepoint | 8 – Other |
| 3 – Crocheted | 6 – Applique | |

CLASS 6 – AFGHANS

- | | | |
|----------------------|-----------------------|------------------------------|
| Lot 1 – Knit Regular | 4 – Crocheted Regular | 7 – Knit Granny Squares |
| 2 – Knit Lap | 5 – Crocheted Lap | 8 – Crocheted Granny Squares |
| 3 – Knit Baby | 6 – Crocheted Baby | 9 – Other |

CLASS 7 – HOBBIES

- | | | |
|-----------------|-------------------------------------|------------------------|
| Lot 1 – Plaques | 7 – Pictures, other than other lots | 13 – Decoupage |
| 2 – Etching | 8 – Dolls | 14 – Quilling |
| 3 – Toys | 9 – Handbags | 15 – Stuffed Toy |
| 4 – Novelties | 10 – Art Foam | 16 – Holidays |
| 5 – Tin Punch | 11 – Felt | 17 – Creative Coloring |
| 6 – Collections | 12 – Puffed/Padded Pictures | 18 – Other |

CLASS 8 – FANCY WORK – CROCHETING

- | | | |
|-------------------------------|-------------------|----------------------|
| Lot 1 – Pillow Case | 7 – Pot Holder | 14 – Baby Toys |
| 2 – Dresser Scarf | 8 – Doily | 15 – Kitchen Towel |
| 3 – Handkerchief | 9 – Slippers | 16 – Dolls |
| 4 – Bedspread | 10 – Doll Clothes | 17 – Christmas Doily |
| 5 – Tablecloth or Lunch Cloth | 11 – Hairpin Lace | 18 – Dish Cloth |
| 6 – Gloves, Mittens | 12 – Booties | 19 – Other |
| | 13 – Baby Sets | |

CLASS 9 – KNITTING

- | | | |
|-----------------------|------------------|------------------|
| Lot 1 – Mittens | 7 – Booties | 13 – Baby Quilts |
| 2 – Sweater, Adult | 8 – Doll Clothes | 14 – Baby Toys |
| 3 – Sweater, Child | 9 – Cap or Hat | 15 – Scarf |
| 4 – Baby Sweater | 10 – Slippers | 16 – Other |
| 5 – Machine Knitting | 11 – Stockings | |
| 6 – Recycled Knitting | 12 – Baby Sets | |

CLASS 10 – WEAVING

- | | |
|-----------------------|-----------|
| Lot 1 – Placemats (2) | 3 – Rugs |
| 2 – Pot Holders (2) | 4 – Other |

CLASS 11 – APPLIQUE

- | | | |
|------------------------|---------------|-----------|
| Lot 1 – Luncheon Cloth | 4 – Aprons | 7 – Other |
| 2 – Dresser Scarf | 5 – Placemats | |
| 3 – Pillow Cases | 6 – Towels | |

CLASS 12 – EMBROIDERY & NEEDLEWORK w/FLOSS

- | | | |
|----------------------|--------------------|--------------|
| Lot 1 – Pillow Cases | 5 – Luncheon Cloth | 9 – Pictures |
| 2 – Dresser Scarf | 6 – Tablecloth | 10 – Other |
| 3 – Dish Towels (2) | 7 – Wall Hanging | |
| 4 – Bedspread | 8 – Doilies | |

CLASS 13 – NEEDLEWORK w/YARN (CREWEL)

- | | | |
|----------------------|---------------------|-----------|
| Lot 1 – Chair Covers | 3 – Handbags, Totes | 5 – Other |
| 2 – Pictures | 4 – Wall Hanging | |

CLASS 14 – PAINTING & DRAWING

- | | | |
|-----------------|-------------------------|--------------------------|
| Lot 1 – Textile | 6 – Oil Animals | 11 – Pen and Ink Picture |
| 2 – Tole | 7 – Oil Ethnic | 12 – Folk Art Painting |
| 3 – Rosemaling | 8 – Pencil Sketches | 13 – Rosemaling |
| 4 – Ceramics | 9 – Acrylic Picture | 14 – Other |
| 5 – Oil | 10 – Watercolor Picture | |

CLASS 15 – SEWING

- | | | |
|-----------------------|------------------|----------------|
| Lot 1 – Adult Garment | 4 – Holiday Item | 7 – Tablecloth |
| 2 – Child's Garment | 5 – Kitchen Item | 8 – Other |
| 3 – Apron | 6 – Outerwear | |

**NO DOGS
ALLOWED****on fairgrounds
premises during the
fair by fairgoers,
except service dogs
and dog shows. This
will be enforced.****NO WATER
BALLOONS or other
WATER TOYS in the
barns to prevent
upsetting the animals.**

UNIVERSITY OF MINNESOTA
EXTENSION



Come See What 4-H Is All About at the Pennington County Fair!

Growing Leaders, Building Community

Welcome to 4-H at the Fair

This year at the fair, we invite you to stop by the 4-H area and see what our local youth have been working hard on all year. From food to shop projects, 4-H is where young people develop confidence, skills, and a sense of community.

Whether you're new to 4-H or have supported it for years, we promise there's something that will surprise and inspire you. Bring the family, grab some food, and spend some time exploring youth projects, cheering on showmanship, and seeing firsthand what 4-H is all about.

Message from the Pennington County 4-H Educator

As we kick off another exciting fair season, the Extension Office extends a warm welcome to all! We are incredibly grateful to the families, dedicated volunteers, the Fair Board, and our generous sponsors for their continued partnership and support. Your involvement is the backbone of this event and the success of our youth programs. We invite the entire community to come out, cheer on our young participants, and celebrate their hard work and accomplishments! Your presence makes a lasting difference. Thank you for helping us grow strong leaders and a stronger community!

4-H Fair Schedule Highlights

All events take place in the Huck Olson Arena or the livestock barns. Come check them out!

- General exhibits in the Arena
- 4-H Horse, Swine, Sheep, Meat Goat, Beef, Rabbit, and Poultry, Dairy Goat, and Dairy shows
- Livestock demonstrations

Full Fair Schedule

See the full schedule online:

<https://z.umn.edu/Pennington4HFairSchedule>

Premium Book – Now Online

For full project details, exhibit rules, and entry information, access the complete premium book online.

View the Premium Book:

<https://z.umn.edu/PenningtonCounty4HPremiumBook>

Blue Ribbon Auction Preview

The 4-H Blue Ribbon Livestock Auction is a key fundraiser that helps support youth activities, scholarships, and fair events throughout the year. It's a great way for our community to come together and show support for local 4-H members as they showcase their hard work and dedication.

Date/Time: Saturday, July 18, 4 pm

Location: Hartz Show Arena

Everyone is welcome to attend and contribute through purchases or donations — it's all about supporting youth success.

Food Stand & Malt Stand

Come enjoy a meal at the 4-H Food Stand! We offer delicious burgers, hand-cut fries, hot dogs, pie, breakfast options and more at a reasonable price!

Afterwards, cool off and enjoy a malt or shake at the 4-H/FFA Malt Stand!

Your purchases support youth programming locally!

What Is 4-H?

4-H is a youth development program for youth in grades K–13. Members choose hands-on project areas they're excited about, set goals, and work with caring adults to grow their skills over time. Along the way, they learn responsibility, communication, leadership, and how to be a part of something bigger than themselves.

Many people think 4-H is just for members who raise animals or live on farms. While animal projects are an important part of what we do, 4-H is for every youth, whether you're interested in science, art, technology, community service, or just trying something new. No matter where you live or what you're passionate about, there's a place for you in 4-H!

Join 4-H: Enrollment Information

Ready to become a part of 4-H? We're always welcoming new members. Whether you love animals, photography, cooking, science, or leadership, there's a project for you.

Open to youth in grades K–13. Find a club or enroll today—check out our website: <https://extension.umn.edu/local/pennington>

Thank You, Volunteers and Leaders

Nothing about 4-H would be possible without the time, patience, and energy of our incredible volunteers. From club leaders to project coaches to food stand helpers, you make this program go. Thank you for being the heart of 4-H.



**THIEF RIVER
CARE CENTER**

Honoring Compassion,
Embracing Community

SKILLED NURSING - LONG-TERM CARE

2001 Eastwood Drive
Thief River Falls, MN
218.683.8100
pfs.sfhs.org

 Thief River Care Center

PENNINGTON COUNTY FAIR

July 15-19th, 2026

Pennington County Fairgrounds, Thief River Falls, MN

Free Admission at the Gate
www.penningtoncountyfair.org



TUESDAY, JULY 14TH

~ "Pre-Fair 4-H Entries & Judging" ~

2:30 - 6:30 P.M. 4-H Exhibits Entered and Conference Judged –
Huck Olson Arena (Only 4-H members and their families
allowed in the Huck Olson Arena.)

WEDNESDAY, JULY 15TH

~ Open Class Entries ~

10:00 A.M. - 5:00 P.M. Open Class Entries in Huck Olson Arena
9:00 A.M. 4-H Dog Show – Bus Garage, followed by Open Class
5:00 - 11:00 P.M. Bandshell Open
5:00 P.M. - Closing Midway Open – A carnival ride bracelet can be
purchased, which will provide an unlimited number
of rides between 5 p.m. and closing
6:00 - 10:00 P.M. Commercial Booths Open – Huck Olson Arena
7:00 P.M. Parade
Dusk Fireworks

THURSDAY, JULY 16TH

~ Open Class Judging ~

9:00 A.M. - 5:00 P.M. All Animal exhibits must be entered at the fair by
5 pm, 4-H entered by 3 pm
10:00 A.M. Open Class Judging – Huck Olson Arena
10:00 A.M. 4-H Horse Show Games & Performance
11:00 A.M. - 10:00 P.M. Commercial Booths Open – Huck Olson Arena
1:00 - 11:00 P.M. Bandshell Open
3:00 P.M. - Closing Midway Open
4:00 - 10:00 P.M. Bingo – Curling Club Building
5:00 P.M. Weigh Livestock – Barns
6:30 P.M. Eagle Creek – Grandstand
followed by Jindo Music Bingo
followed Slamabama – Grandstand
6:30 P.M. Judge Meat Goats

FRIDAY, JULY 17TH

8:00 A.M. Livestock Judging: Swine, Sheep and Beef Cattle
10:00 A.M. 4-H Rabbit followed by Open Class Rabbit Judging
11:00 A.M. - 10:00 P.M. Commercial Booths Open – Huck Olson Arena
1:00 - 11:00 P.M. Bandshell Open
1:30 P.M. Sr. Citizen Program – Bus Garage
2:30 P.M. 4-H Poultry Judging followed by Open Class
3:00 P.M. - Closing Midway Open
4:00 - 10:00 P.M. Bingo – Curling Club Building
7:00 P.M. Bullride – Grandstand

SATURDAY, JULY 18TH

8:00 A.M.
9:30 A.M.
10:00 A.M. - 3:00 P.M.
11:00 A.M. - 3:00 P.M.
11:00 A.M. - 10:00 P.M.
1:00 - 11:00 P.M.
1:00 P.M. - Closing
TBA
2:00 - 10:00 P.M.
3:00 P.M.
7:00 P.M.

Dairy Goat Judging followed by 4-H and
Open Class Dairy Judging
Open Class Horse Show - Performance Class
Norwegian Day Activities - Tri-Valley Bus Garage
Children & Family Library Activities
Commercial Booths Open – Huck Olson Arena
Bandshell Open
Midway Opens
Livestock Demonstrations - Barns
Bingo – Curling Club Building
4-H Blue Ribbon Auction – Hartz Livestock Arena
Bullride - Grandstand

SUNDAY, JULY 19TH

~ "Family Day" ~

9:30 A.M.
11:00 A.M. - 6:00 P.M.
1:00 - 3:00 P.M.
1:00 P.M.
1:00 P.M. - Closing
2:00 - 9:00 P.M.
3:00 P.M.
4:00 - Close
4:30 P.M.
5:00 P.M.

Open Class Horse Show - Games
Commercial Booths Open – Huck Olson Arena
Bandshell Open
Pedal Pull in Front of Arena - Registration opens at Noon
Midway Opens
Bingo – Curling Club Building
4-H Fashion Revue, 4-H Award Program, Herdsmanship,
Grand Champions, 4-H Hall of Fame, Farm Family of the Year
Emerging Leadership and Century Farms
Bandshell Open
Power Wheels Demo Derby and
Demo Derby – Grandstand
Exhibits Released

FIREWORKS

Wednesday at Dusk

Sponsored By
AMUSEMENT ATTRACTIONS
PENNINGTON CO. FAIR BOARD
View from the Fairgrounds

PARKING: \$5.00 per day or \$10.00 season pass.
Handicapped parking reserved by the arena and grandstand.
Parking directed by the Boys & Girls Tennis Clubs
No free parking for exhibitors or workers.

EXHIBITORS: Livestock entries use West entrance (off Barzen Ave.)
PUBLIC ENTRANCE: Use only West, North and East entrances to the fairgrounds.